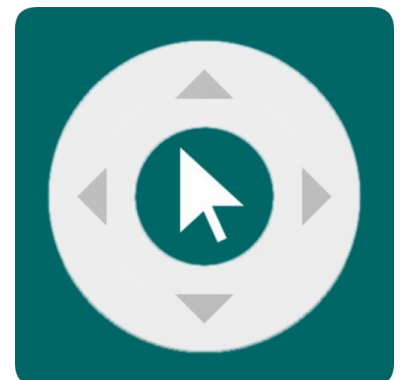


ZankRemote Installation and Usage Guide



Version: 2.0.5
Date: Tuesday, August 19, 2025
Authors: Richard Mullins, Richard Woodburn



Contents

Overview	4
Remote	4
Launcher	4
Features	6
Remote	6
Launcher	6
Installation	7
Standard Installation	7
App Launcher	10
Device Setup	12
Control	13
Remote	13
Launcher	13
Sequences	14
Remote	14
Launcher	14
Events	15
AppLaunched	15
Licensing	16
Marketplace	16
To Purchase drivers	16
Create Chowmain Project and obtain Project Code	16
To Assign purchased drivers to Project	17
Crestron Home	19
Standard Install Chowmain Agent	19
Manually Install Chowmain Agent	19
Link Crestron Home Project to Processor	20
LICENCING FAQ	20
What are the Requirements for Chowmain licencing?	20
How do I know if the deployed driver is using Chowmain Licencing?	20
How does the trial period work?	21

Where do I buy a Licence from?..... 21
Can I upgrade old versions of drivers from previous marketplaces to Chowmain?.....21

Overview

Want to control the Amazon Fire TV, Chromecast with Google TV, Nvidia Shield, Xiaomi Mibox, AirTV and more? The Chowmain Android TV driver is designed to control Google Android TV boxes. It is a software only solution so no extra hardware required.

This allows you to navigate the Android operating system and control applications as you would with a normal infra red remote control. No need to root the device and no need to install any additional hardware.

This driver requires a 3rd party application called Zank Remote ([Amazon App Store](#) / [Google Play Store](#)) be installed and configured on your android device. Just install the app from amazon app store or play store and follow the instructions to configure the Android TV box. We partnered with the developer of Zank to further develop their app to provide the functionality we require for integration. Note a portion of licencing revenue goes towards our partners at Zank to support the Zank app development.

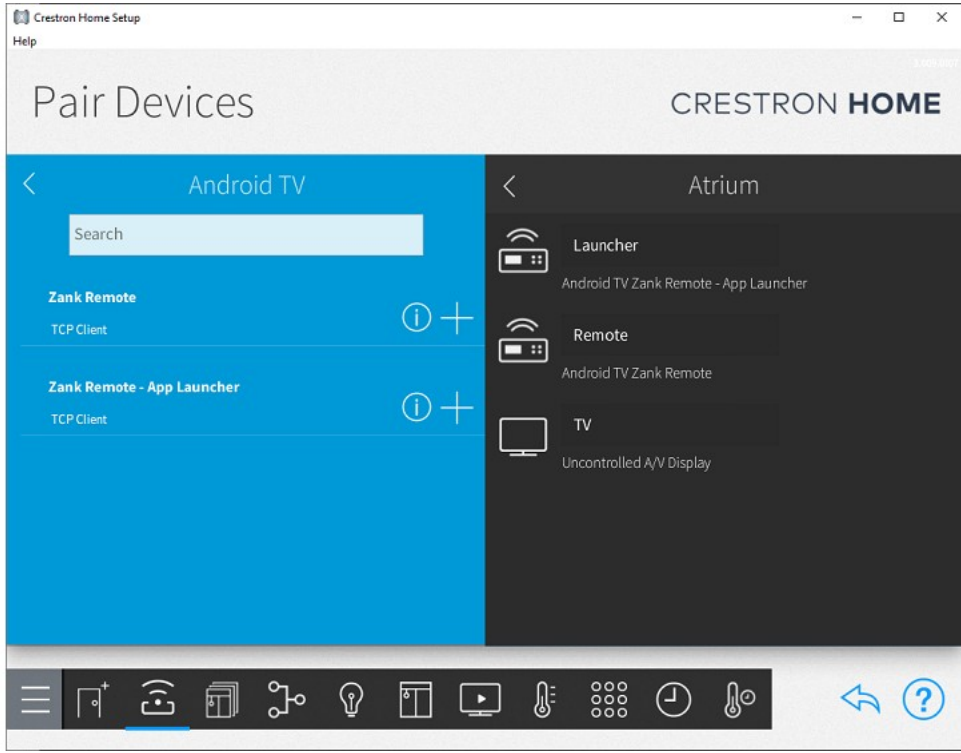
The Driver will also scan your device and provide a list of apps that can be launched directly, no need to use the menu to find apps any more.

Remote

The Zank Android Remote driver provides IP control your Android TV or Fire TV device. The Driver communicates with your Android TV or FireTV using the Zank remote app. The app launches automatically once its installed, so you get very fast access to your Android TV or Fire TV device once it starts up.

Launcher

The App Launcher driver provides a manageable list of applications able to be run on your device. This also includes being able to use the launch command from sequences for any of the visible applications.



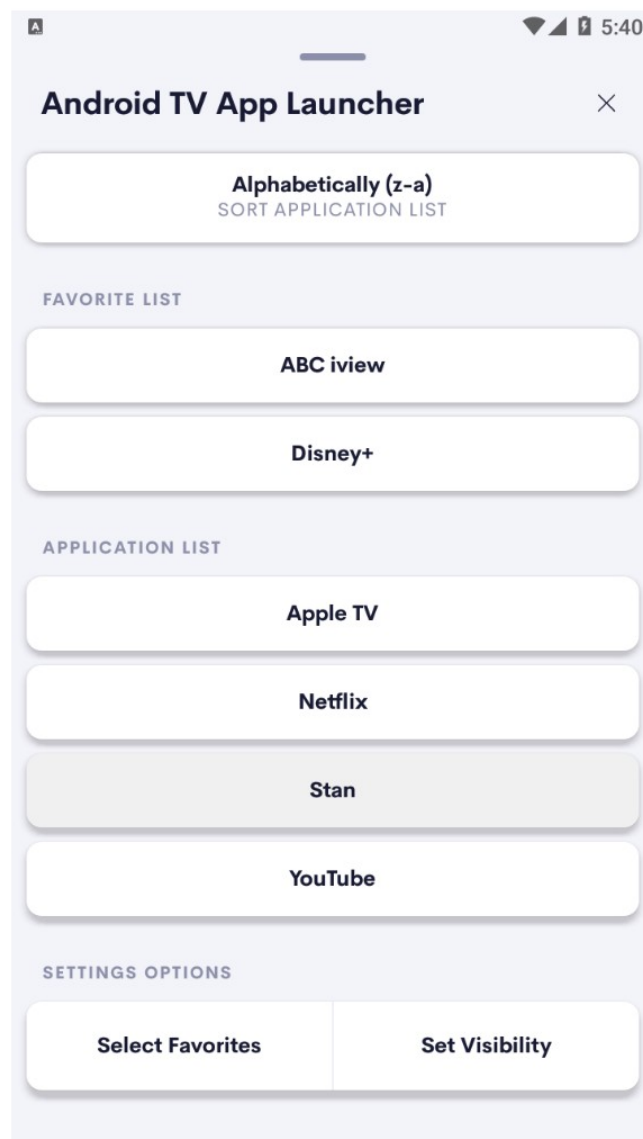
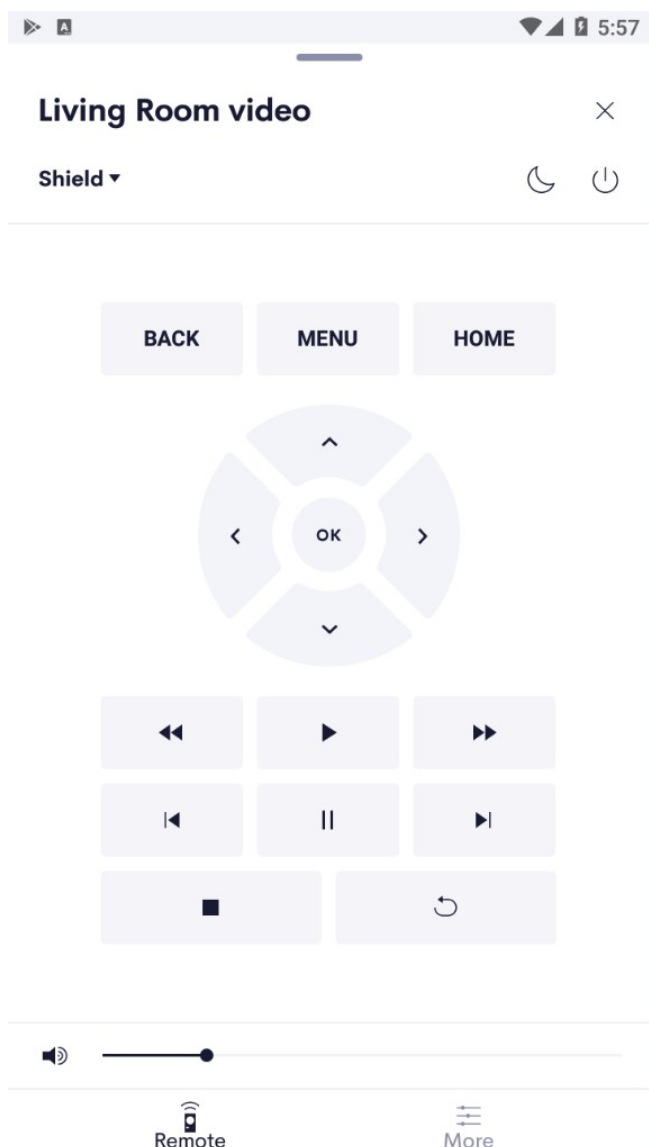
Features

Remote

- IP Control of your Android TV or Fire TV device, no additional hardware required.
- DPAD control for all your apps as well as the main interface
- Actions available for all the common commands

Launcher

- Discovery of installed applications.
- Quick sorting including alphabetically by most used or just the favorite list.
- Set an application as a favorite to stick it to the top of the list.
- Ability to hide applications not commonly used.
- Applications installed or removed from your device will be updated shortly afterwards on the app. (polling is set to 1 minute)



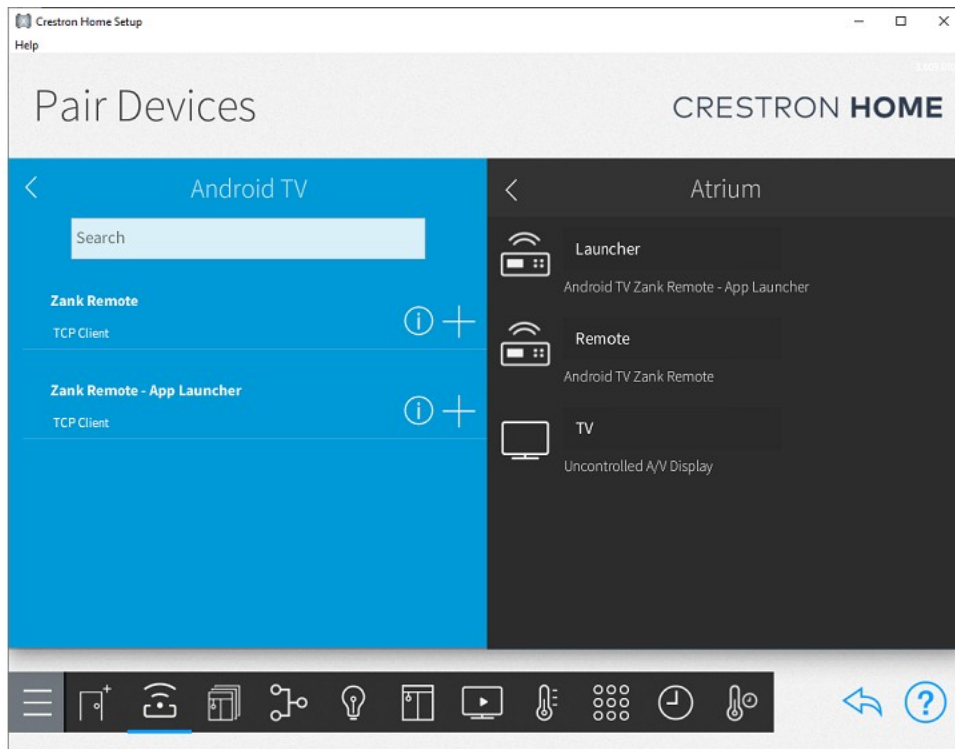
Installation

Standard Installation

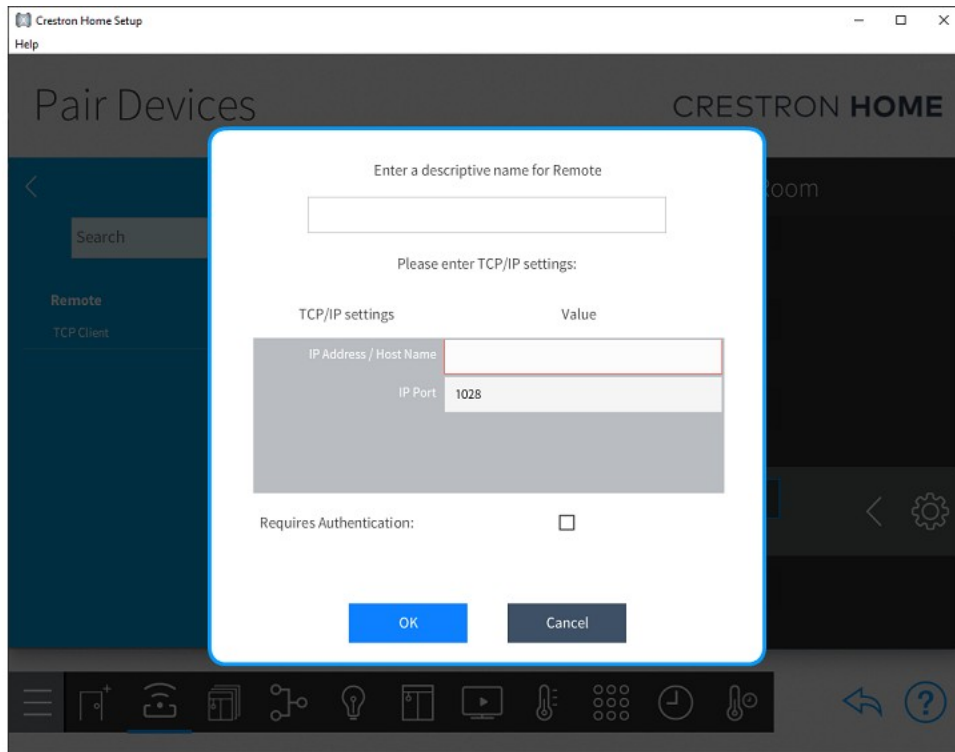
The Zank Remote Crestron driver relies on having the Zank Remote Android App installed on your Android TV or Fire TV device. The app is available in the Android Play Store or the Amazon Store and can be found by searching for Zank.

The Zank Remote Crestron Home driver is available for installation directly from the Drivers menu in the Pair Devices step in the Crestron Setup App. To find the driver you need to go into...

1. Pair Devices
2. Drivers
3. Streaming Player
4. Android TV
5. Zank Remote
6. Press the + button



7. Enter the device name.
8. Enter the IP address of the device where the Zank Remote app is running.
9. The default TCP port used for Zank remote is 1029 only change if instructed to do so.



10. The default UDP port is set to 1028, only change this value if instructed to do so.

Pair Devices

CRESTRON HOME

Search

Zank Remote
TCP Client

Zank Remote (Chowme)
TCP Client

Zank Remote - App Lau
TCP Client

Installation Settings

Android Remote Setup

Please make sure you have installed the Zank Remote for Android TV Box app

UDP Port

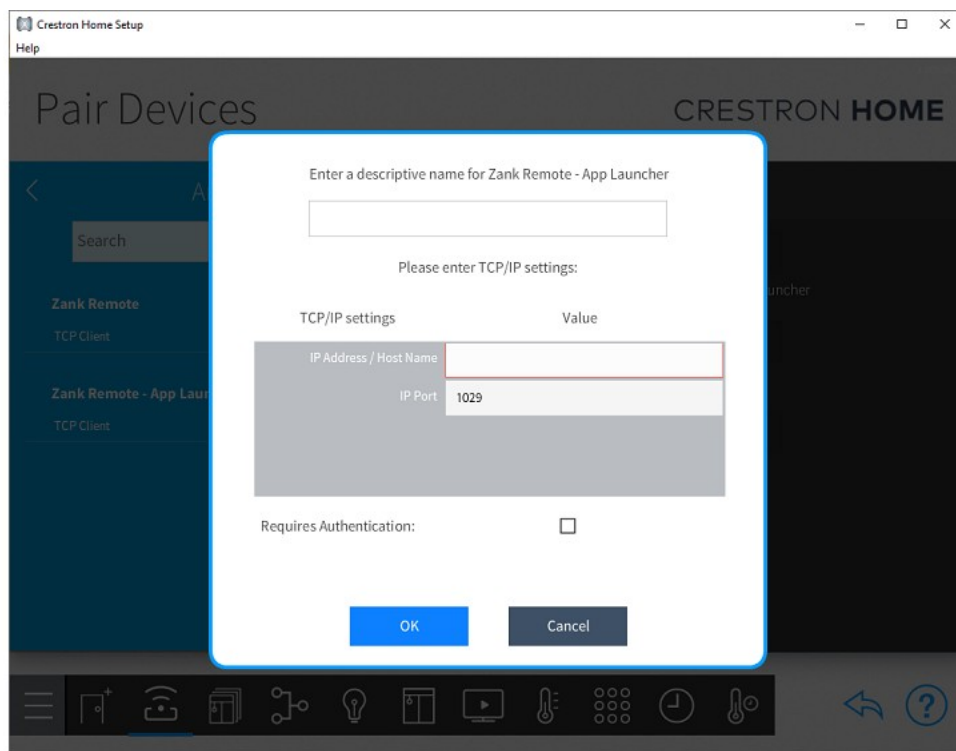
Used for sending commands to the device, change only if instructed to do so

OK Cancel

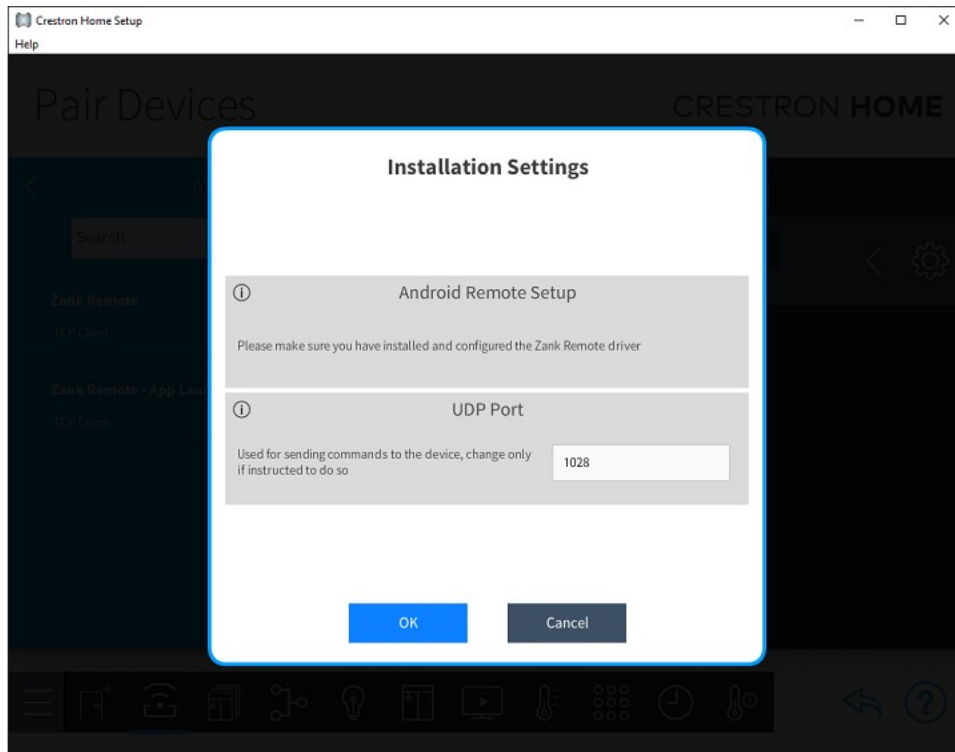
App Launcher

The App Launcher can be found in the same location as the remote and should only be installed only after the remote has been installed and configured. To find the driver you need to go into...

1. Pair Devices
2. Drivers
3. Streaming Player
4. Android TV
5. Zank Remote - App Launcher
6. Press the + button



7. Enter the device name.
8. Enter the IP address of the device where the Zank Remote app is running.
9. The default TCP port used for the app launcher is 1029 only change if instructed to do so.



10. The default UDP port is set to 1028, only change this value if instructed to do so.

11. The applications list is updated on the first poll after setup, this will take about 1 minute to initialize.

Note:

- No licence is required to use the launcher app but a working remote must be running on the system.
- Settings are saved per connected device, so individual TV's will have their own favorites etc.

Device Setup

The Zank Remote Crestron driver relies on having the Zank Remote Android App installed on your Android TV or Fire TV device. The app is available in the Android Play Store or the Amazon Store and can be found by searching for Zank.

When you first install the Zank app it will run through the required setup process. You can also check our knowledgebase article here <https://help.chowmain.software/portal/en/kb/articles/config-android-tv-zank-remote>

In addition to the config above, you should also disable the sleep modes. The process will vary from device to device, but here is an example for the Fire TV

Go to

- Display and audio
- Display
- Sleep mode behaviour
- Select black screen

Control

Remote

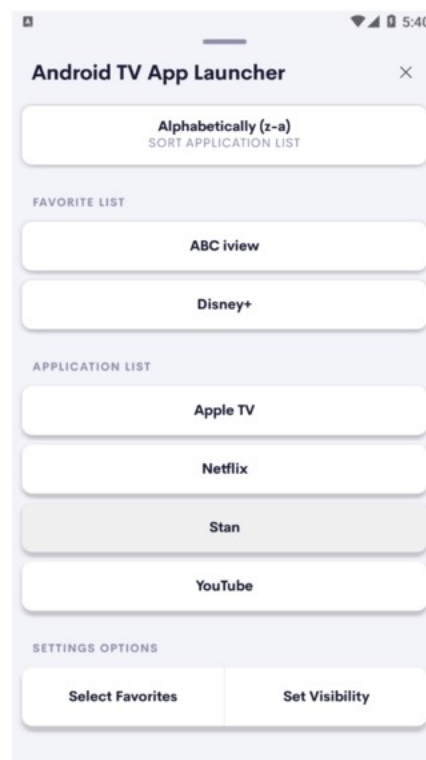
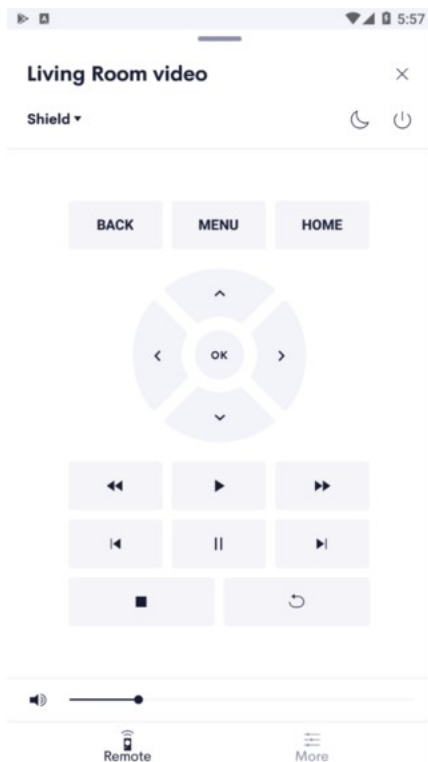
The Android TV Remote driver doesn't have its own user interface, instead forming the functional setup for other devices. Most of the setup required will be in the Source Routes configuration.

Launcher

The Android TV App Launcher will fetch the available applications from your device. Sitting above the list are the sorting options and at the bottom are the settings to favorite or hide an app. Favorited apps that are still visible will appear at the top of the list in their own group.

Sorting options available are:

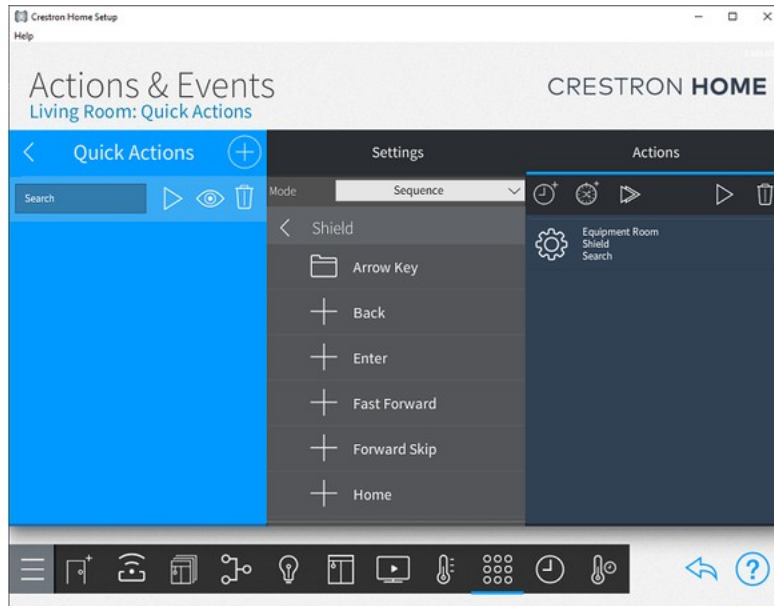
1. Alphabetically A-Z
2. Alphabetically Z-A
3. Most Used - as you launch apps the most used will move to the top of the list.
4. Favorites Only - Only shows the apps that have been favorited.



Sequences

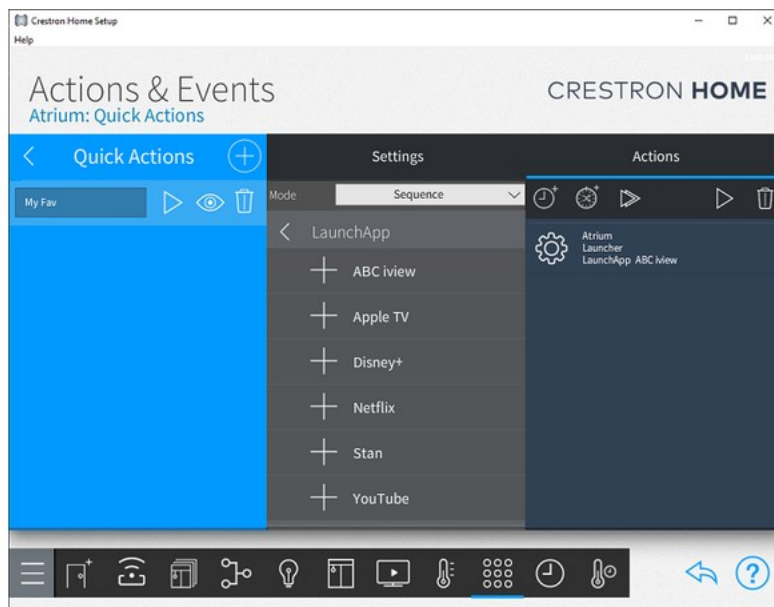
Remote

The receiver offers a number of actions for use in your own macros. The macros conform to the standard set available under Media Operations.



Launcher

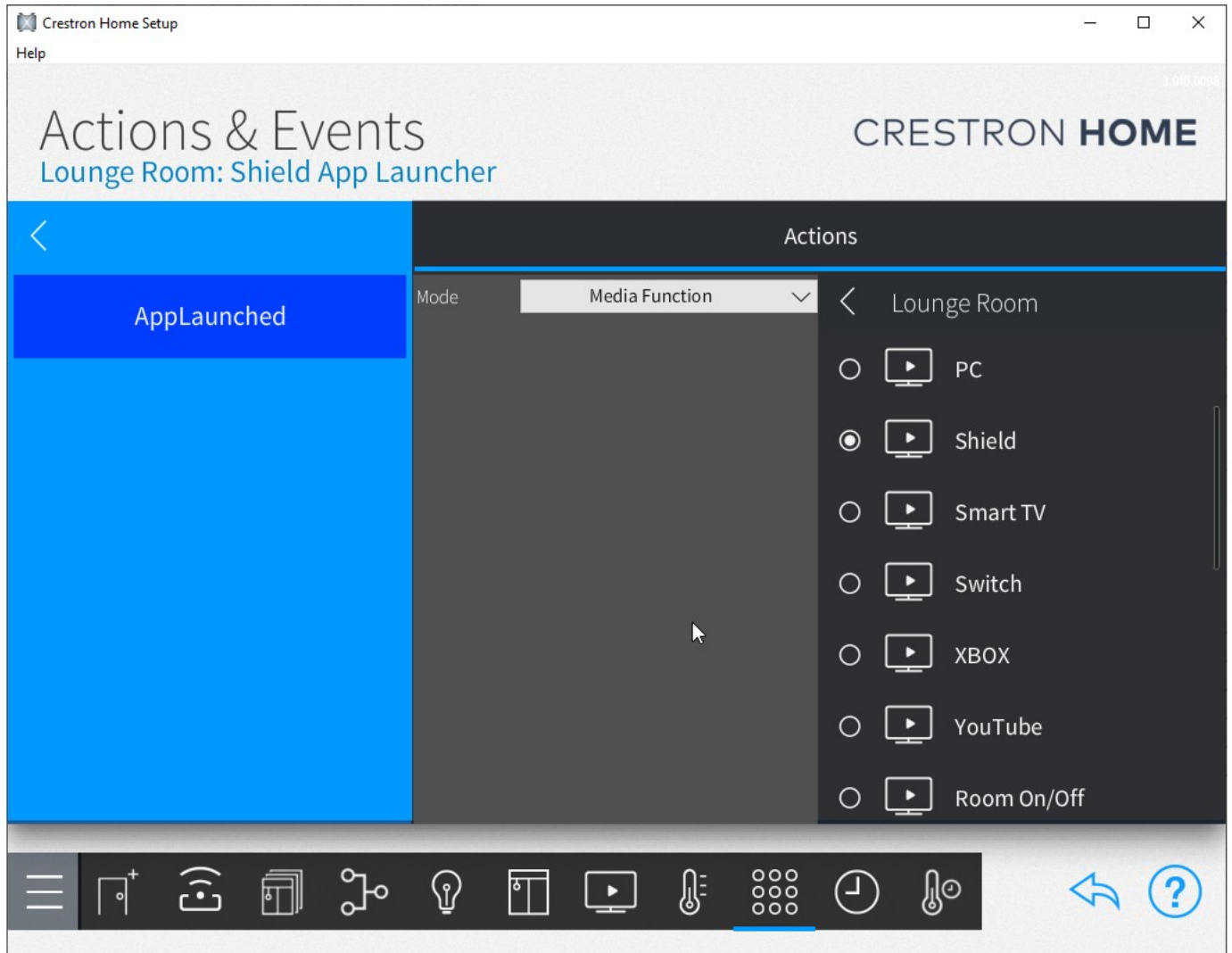
Each application that has not been hidden will be available to include in a macro from the sequence options under the LaunchApp selection.



Events

AppLaunched

The AppLaunched event will trigger any time an app is launched. This can be used to automate turning on the TV and selecting your Android TV device just by launching an app.



Licensing

Marketplace

To Purchase drivers

Chowmain Drivers are only available to authorized dealers. Integrators can sign up to a Chowmain account via the [Chowmain Website](#). Authorization of dealers can take up to 48 hours; however, you can trial the drivers without an account.

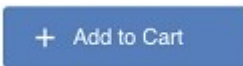
1. Navigate to the login page of Chowmain website: [Chowmain - Login](#)
2. Sign in using credentials provided after sign up request approval
3. Ensure you are logged into the website using website's header: registration and sign up buttons are replaced with cart icon and user icon



4. Navigate to the drivers page: [Chowmain - Drivers](#)
5. Alternatively, you can use the global search input in the header to find the driver



6. Search for and locate the driver you are interested. Click *Add To Cart*



7. Once you have added all drivers to your cart, navigate to the shopping cart: [Chowmain - Cart](#)
8. Click *Checkout & Pay*. Follow the directions



9. Purchase confirmation will be sent to your email, all orders can be viewed in the [Chowmain - Orders](#)
10. Once the payment is processed, the driver will be available in your account: [Chowmain - My Drivers](#)

Create Chowmain Project and obtain Project Code

Note:

- Showroom Projects contain all drivers of its Control System
- Paid licenses cannot be assigned to Showroom Projects
- Only 1 Project is required per home
- If the Project has already been created, do not create a second one
- If controller already has a Project code created by another installer, please contact the original installer for access. If the original installer is unavailable, contact [Chowmain - Support](#)

- If the controller has been replaced and the license needs to be transferred to a new controller you can do so yourself via the website

1. Ensure you are signed into the [Chowmain Website](#)

2. Navigate to [Dashboard => Projects](#)



3. Click *Create Project*:



4. Complete the details for the Project (*Project Name, Customer Name, Control System*)

5. Upon completion, take note of the **Project Code**. This is required to link the Control System to the newly created project

To Assign purchased drivers to Project

NOTE: Driver must already be purchased and a Project Code must be created as per above 'Create Chowmain Project and obtain Project Code' section

1. Navigate to [Chowmain Software - Projects](#). Click the *Project Name* you wish to assign the driver to

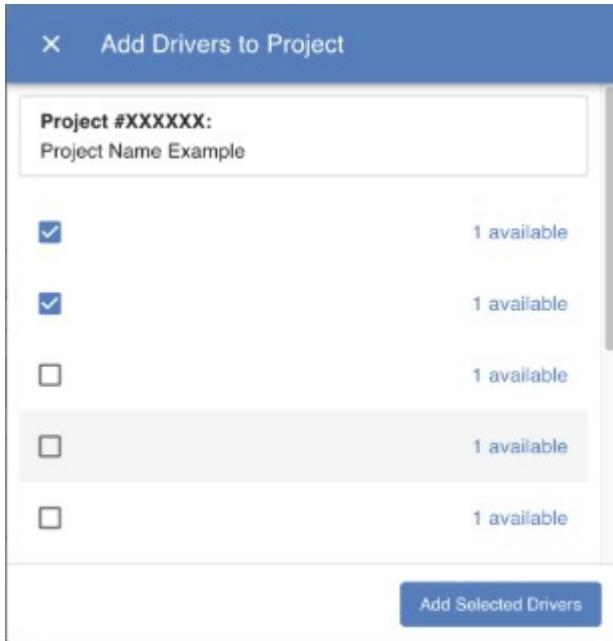
Project Name	Project Code	Licensed	Showroom	Platforms ↑
⋮	XXXXXX	0	✓	
⋮	XXXXXX	0	✗	

Rows per page: 15 ▾ 1-2 of 2 < >

2. Click the *Add License(s)*:

Add License(s)

3. Select Drivers you wish to assign to the project, and click *Add Selected Drivers*:



4. Alternatively you can add in drivers via the [Chowmain - Drivers](#)

5. The driver will be added to the project with the license status *Licensed*

Driver Name	Version	License	Health	Autoupdate	Logging Approved	Log Level
<input type="checkbox"/> ▾		licensed	-	false	-	-
<input type="checkbox"/> ▾		licensed	-	false	-	-

Crestron Home

NOTE: Licensed Chowmain drivers come with a complimentary 90-day trial period. To license the driver, installation of the Chowmain Project Agent is required. The Project Agent is also required for automatic driver updates. Throughout the 90-day trial period, Chowmain Drivers operate without any limitations. After this period, the driver will be disabled unless properly licensed.

Installation of the Chowmain Agent is required to licence drivers. Only a single instance of Chowmain Agent should be installed.

Standard Install Chowmain Agent

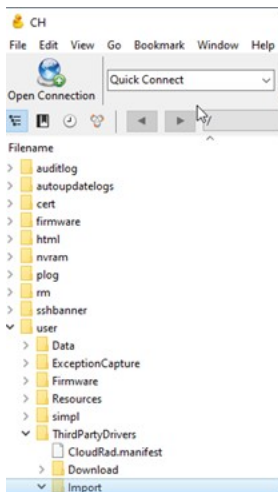
The Chowmain Agent is available for installation directly from the Drivers menu in the Pair Devices step in the Crestron Setup App.

1. Pair Devices
2. Drivers
3. License Manager
4. Chowmain
5. Project Agent
6. Press the + Button

Manually Install Chowmain Agent

You can also manually install the driver if it is not yet available on the online database.

1. Download Chowmain Project Agent From the [Chowmain Project Agent Page](#)
2. Connect to the processor via SFTP connection
3. copy the PKG file to the /user/ThirdPartyDrivers/Import



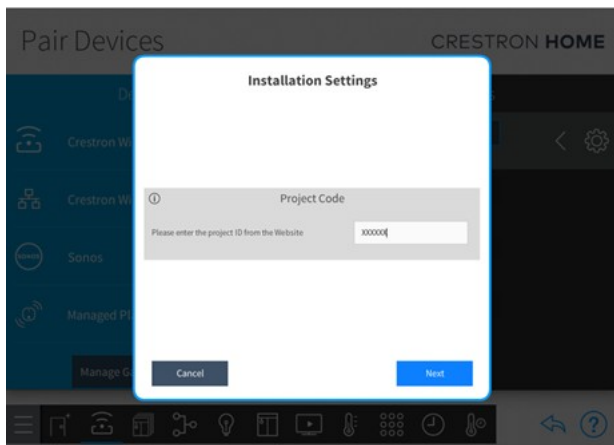
4. Follow the standard installation step using the Crestron Home Setup App.

Link Crestron Home Project to Processor

1. Have the Project Code ready. The Project Code is obtained from the Chowmain website. If the Project Code has been created but is unknown, it can be found on the [Chowmainsoft Website - Projects](#) website



2. During the installation of the Chowmain Project Agent, enter the Project Code and complete the setup.



3. The Project Code can be enter at a later date if not entered during the initial setup. Simply click on the cog of the Chowmain Project Agent, go to "Installation Settings" page, enter the Project Code and click "OK".
4. **Please note:** If project code has been used previously on another controller you can revoke the licence for use again.

LICENCING FAQ

What are the Requirements for Chowmain licencing?

- Driver trials do not require Agent to be installed.
- To activate licenced drivers, *Chowmain Project Agent* must be installed.
- Internet is required during the licence registration process.
- If Internet is lost then the licence will persist the last state.
- If the Chowmain Project Agent is removed then licencing will be invalidated. Do not remove the Chowmain Project Agent once installed.

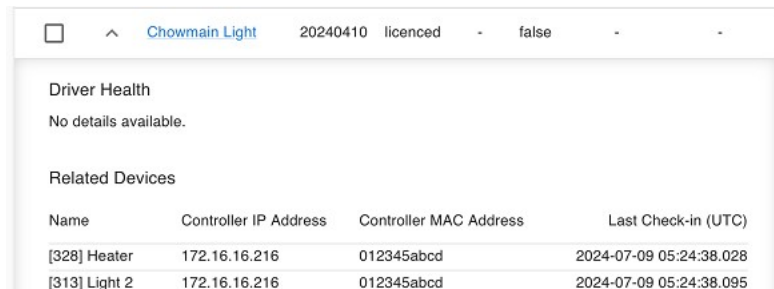
How do I know if the deployed driver is using Chowmain Licencing?

- There are multiple ways:
 1. Chowmain licenced drivers no longer have the Licence input box in the "Installation Settings" page.
 2. If the *Project Code* has been correctly entered in Chowmain Project Agent and the project is registered, you can find the list of Chowmain-licensed drivers deployed on your controller using the Chowmain website.
 1. Navigate to [Chowmainsoft Website - Projects](#)

2. Select your Project Code

Platform ↑	Project Name	Project Code	Drivers
⋮	Sample Driver	XXXXXX	0

3. Known Chowmain Drivers will be listed, and if you select the driver, it will list which drivers in the project are known to be CM Licenced. Please note, this list may not update immediately



The screenshot shows a web interface for 'Chowmain Light' with project ID 20240410. It displays 'Driver Health' with 'No details available.' Below that is a 'Related Devices' table:

Name	Controller IP Address	Controller MAC Address	Last Check-in (UTC)
[328] Heater	172.16.16.216	012345abcd	2024-07-09 05:24:38.028
[313] Light 2	172.16.16.216	012345abcd	2024-07-09 05:24:38.095

How does the trial period work?

- All Chowmain drivers are free to use for 90 days. When the trial expires the driver will cease to function until you purchase a licence and apply it to the project.

Where do I buy a Licence from?

- Chowmain Crestron Home Drivers are only available to Crestron Home installers. Installers can sign up to a Chowmain account using: <https://chowmain.software/signup>. If you are a home owner you should contact your automation installer for support, purchase and installation of drivers
- This driver is developed by Chowmainsoft and can be purchased from the [Chowmainsoft Website](#).
- All licences are site licences. This means the one licence can be used to unlock as many instances of the same driver in the same project.

Can I upgrade old versions of drivers from previous marketplaces to Chowmain?

If you have a driver that has an active licence from a previous marketplace, it can be moved over to the Chowmain Licence system in just a few steps.

1. Install Chowmain Project Agent, and assign a Project Agent as required
2. Ensure all drivers are up to date, and replace obsolete drivers with updated builds.
3. Contact Chowmain and let us know the driver and the project you have assigned it to

We will then verify the licence and active it on the new system.