

Anthem MDX Installation and Usage Guide



Version: 1.1.1
Date: Wednesday, March 29, 2023
Authors: Richard Mullins



Contents

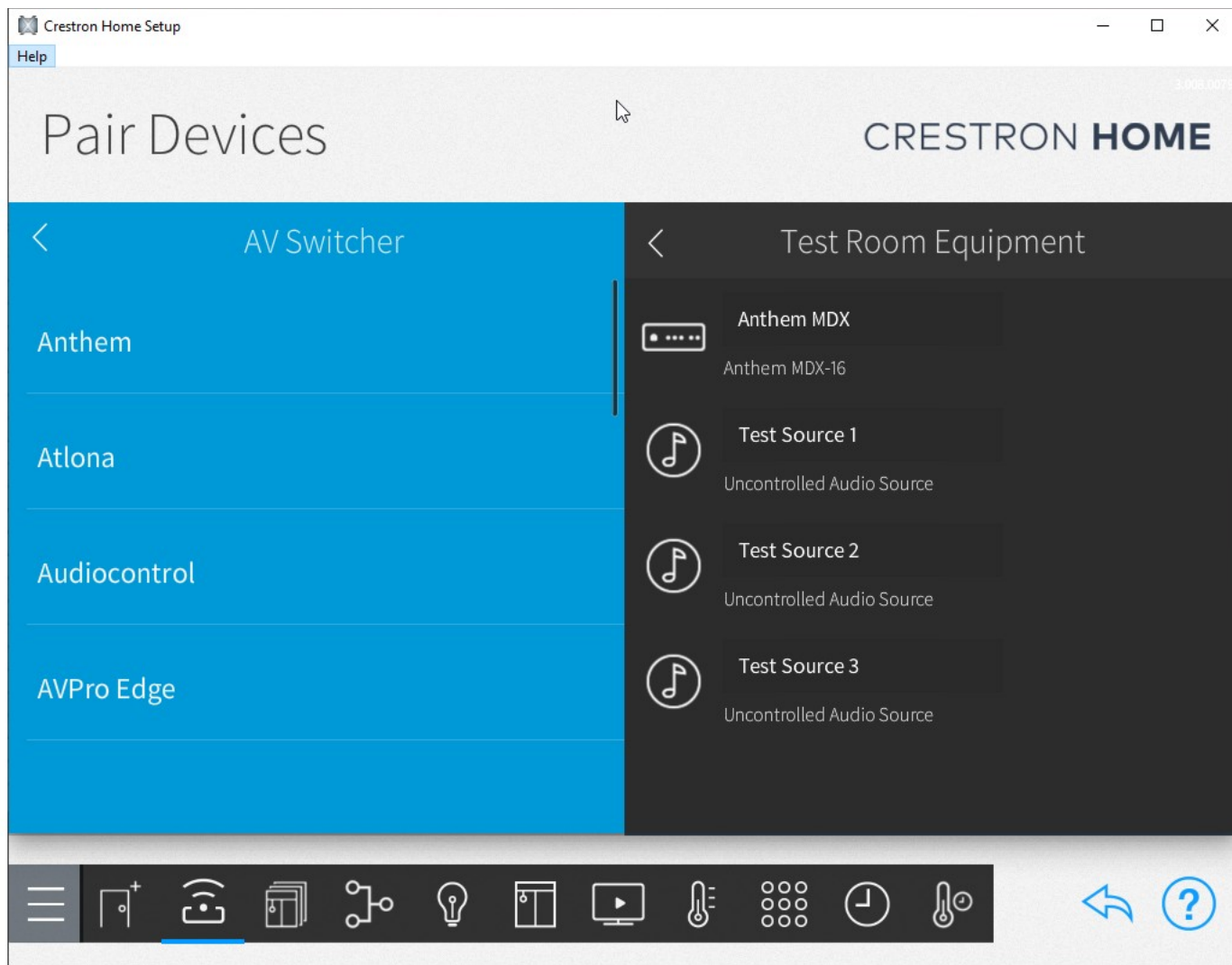
Overview	3
Features	4
Installation	5
Standard Installation.....	5
Manual Installation.....	6
Control.....	7
Sequences.....	8
Offline.....	9

Overview

The Anthem MDX Series are the first distribution systems to feature fully powered independent-zone subwoofer connections, as well as ARC® Genesis room correction for each zone.

MDX Series features today's cutting-edge Anthem amplifier technology so you can expect smooth, efficient, consistent high power and reliability. MDX Series is engineered to simplify your next custom audio system installation, and to blow your clients away with extreme performance in any setup.

The Crestron Home MDX driver allows for quick and easy integration of this multizone device.



Features

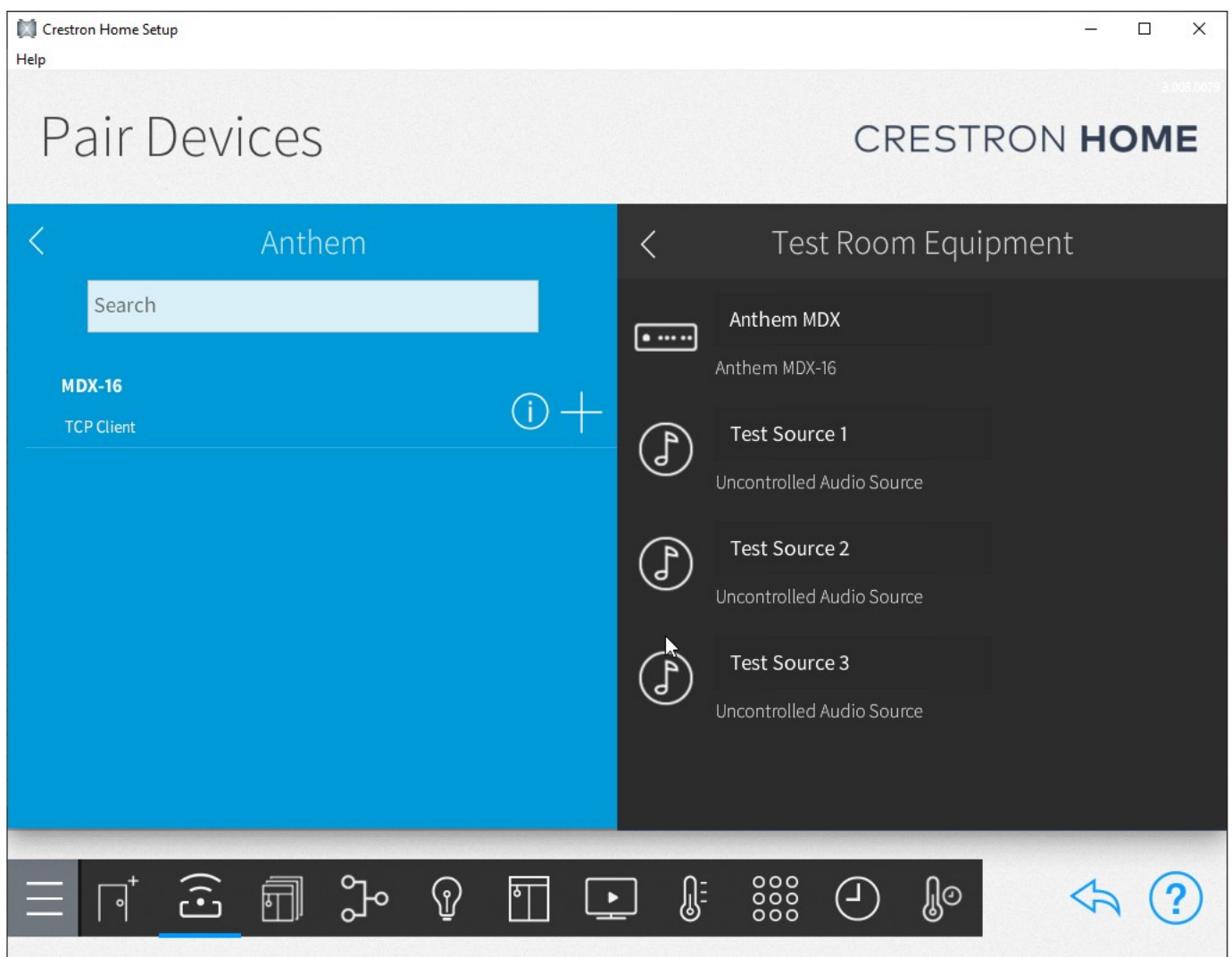
- IP control
- Quick integration for each of the 8 inputs and 8 outputs
- Inputs are generic audio allowing a wide range of devices to easy connect
- Standard actions can be used in your sequences
- Set zone power and provide feedback
- Set zone input and provide feedback
- Set Zone Volume and provide feedback
- Set Zone Mute and provide feedback

Installation

Standard Installation

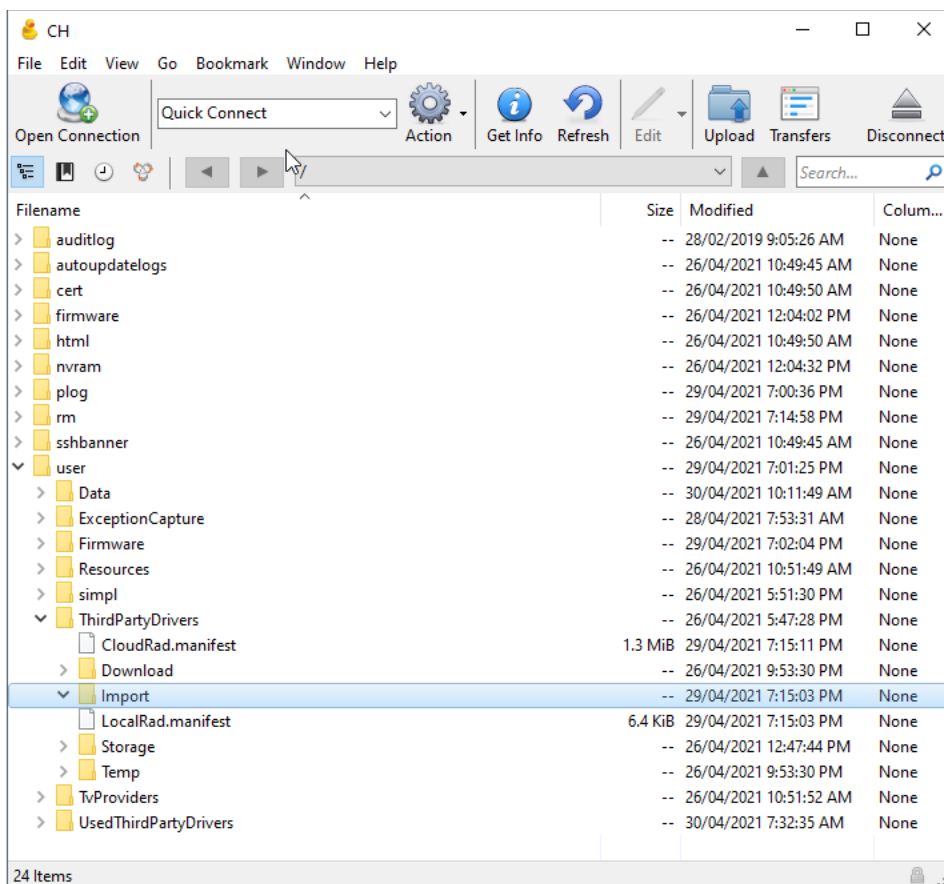
The Anthem MDX Crestron Home module is available for installation directly from the Drivers menu in the Pair Devices step in the Crestron Setup App. To find the driver you need to go into

1. Pair Devices
2. Drivers
3. AV Switcher
4. Anthem
5. Choose your Anthem Model (MDX-16)
6. Press the + button



Manual Installation

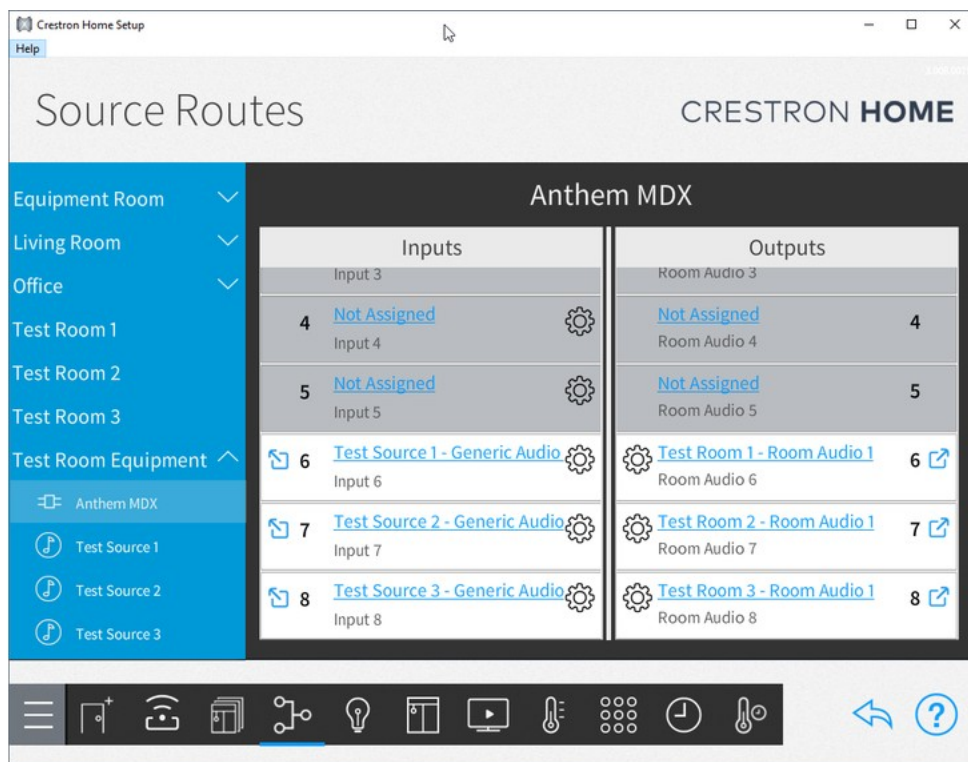
If you want to replace the driver from the online database, or if its not currently there, you can manually install the driver. To manually install you will need to first copy the driver on to your Crestron Home processor. You will fist need to make a SFTP connection to the processor, you can do that with software like Cyberduck or Filezilla. Once you are connected you will need to copy the driver to the /user/ThirdPartyDrivers/Import folder. With this done you can go back to the Standard Installation steps.



Control

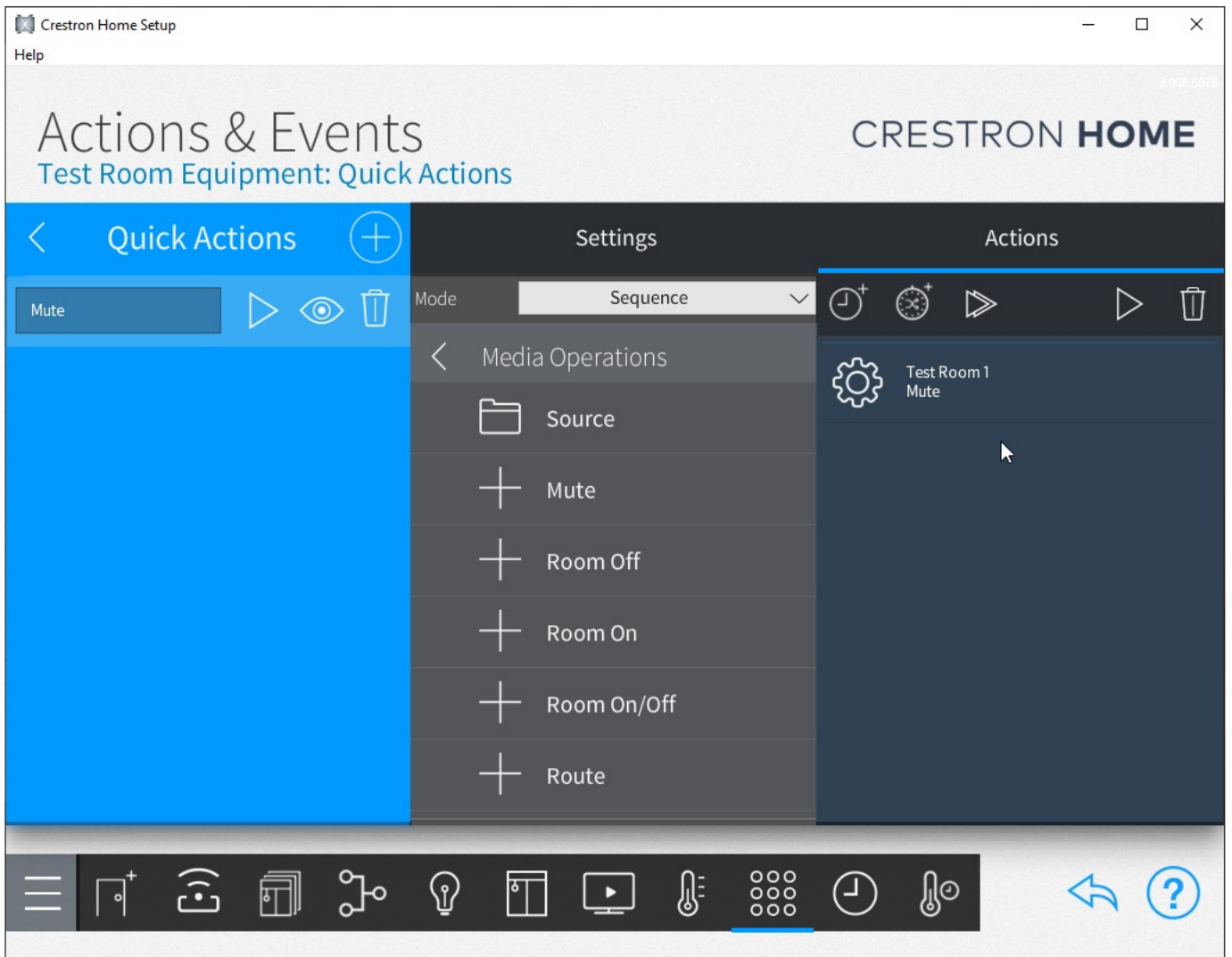
The Anthem MDX driver doesn't have its own user interface, instead forming the functional setup for other devices. Most of the setup required will be in the Source Routes configuration.

Each of the 8 inputs and outputs are available for configuration. The inputs are a generic audio type allowing you to connect any audio device with a similar output type. The outputs provide room audio and can be attached to any of your configured rooms.



Sequences

The receiver offers a number of actions for use in your own macros. The macros conform to the standard set available under Media Operations.



Offline

If the driver loses connection to the Anthem Switcher it will show as being offline. The driver will attempt to reconnect and if successful will automatically change back to being online. NOTE: there is no user interface for the receiver so you will need to check the settings page in the pair devices section of the configuration app.

