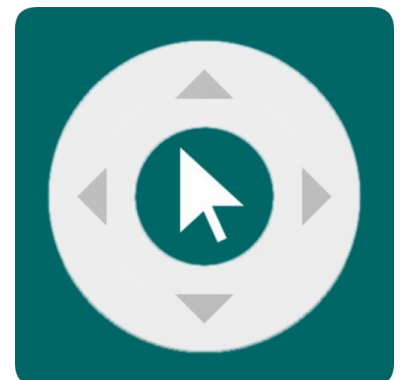


ZankRemote Installation and Usage Guide



Date: Thursday, 30 December 2021
Authors: Richard Mullins, Richard Woodburn



Contents

Overview	3
Remote.....	3
Launcher.....	3
Features	4
Remote.....	4
Launcher.....	4
Installation	5
Standard Installation.....	5
App Launcher	7
Manual Installation	9
Control	10
Remote.....	10
Launcher.....	10
Sequences	11
Remote.....	11
Launcher.....	11
Events	12
AppLaunched.....	12

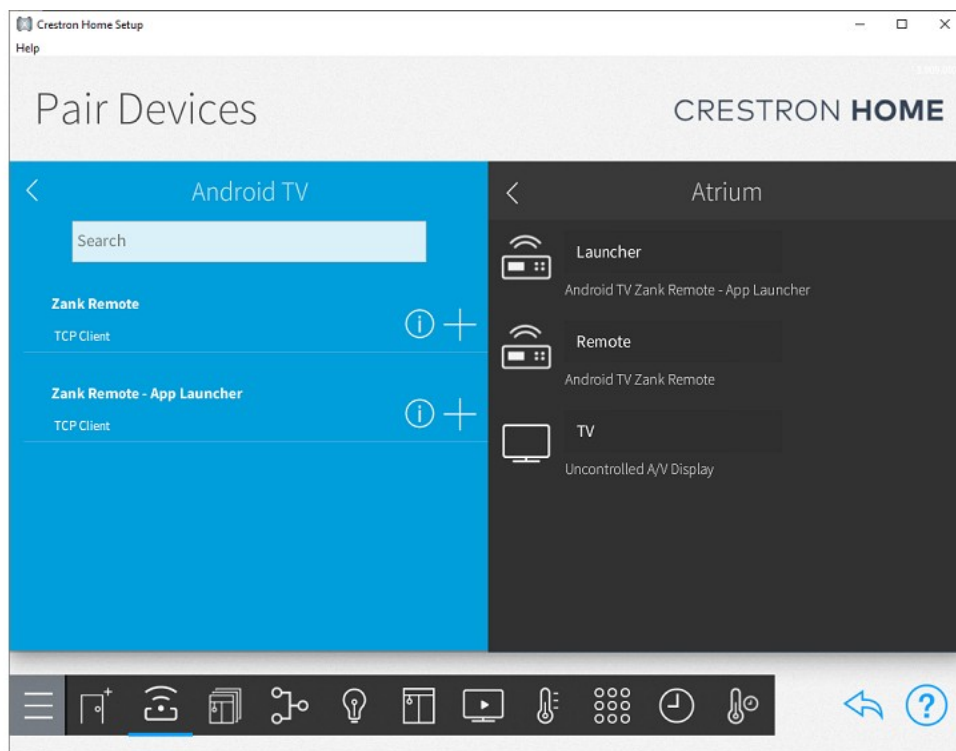
Overview

Remote

The Zank Android Remote driver provides IP control your Android TV or Fire TV device. The Driver communicates with your Android TV or FireTV using the Zank remote app. The app launches automatically once its installed, so you get very fast access to your Android TV or Fire TV device once it starts up.

Launcher

The App Launcher driver provides a manageable list of applications able to be run on your device. This also includes being able to use the launch command from sequences for any of the visible applications.



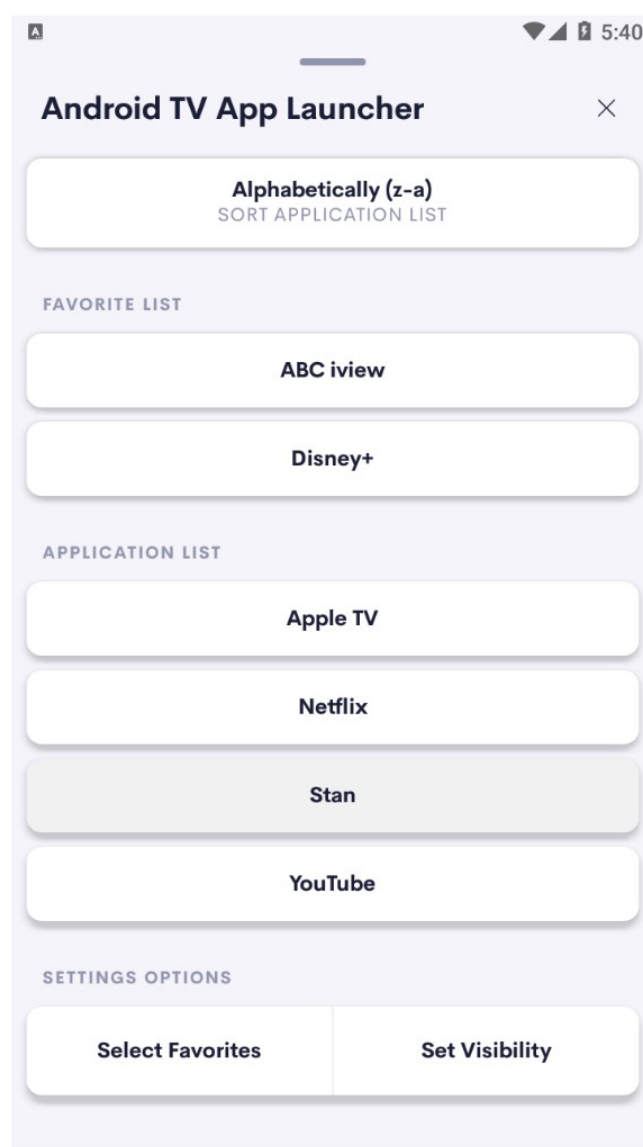
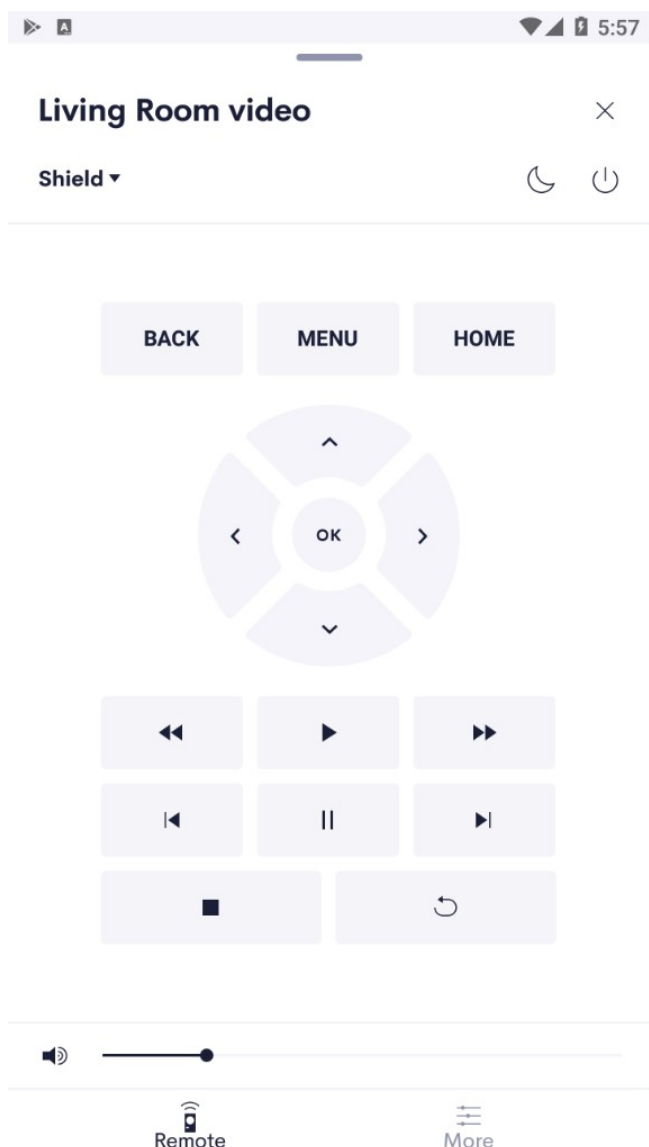
Features

Remote

- IP Control of your Android TV or Fire TV device, no additional hardware required.
- DPAD control for all your apps as well as the main interface
- Actions available for all the common commands

Launcher

- Discovery of installed applications.
- Quick sorting including alphabetically by most used or just the favorite list.
- Set an application as a favorite to stick it to the top of the list.
- Ability to hide applications not commonly used.
- Applications installed or removed from your device will be updated shortly afterwards on the app. (polling is set to 1 minute)



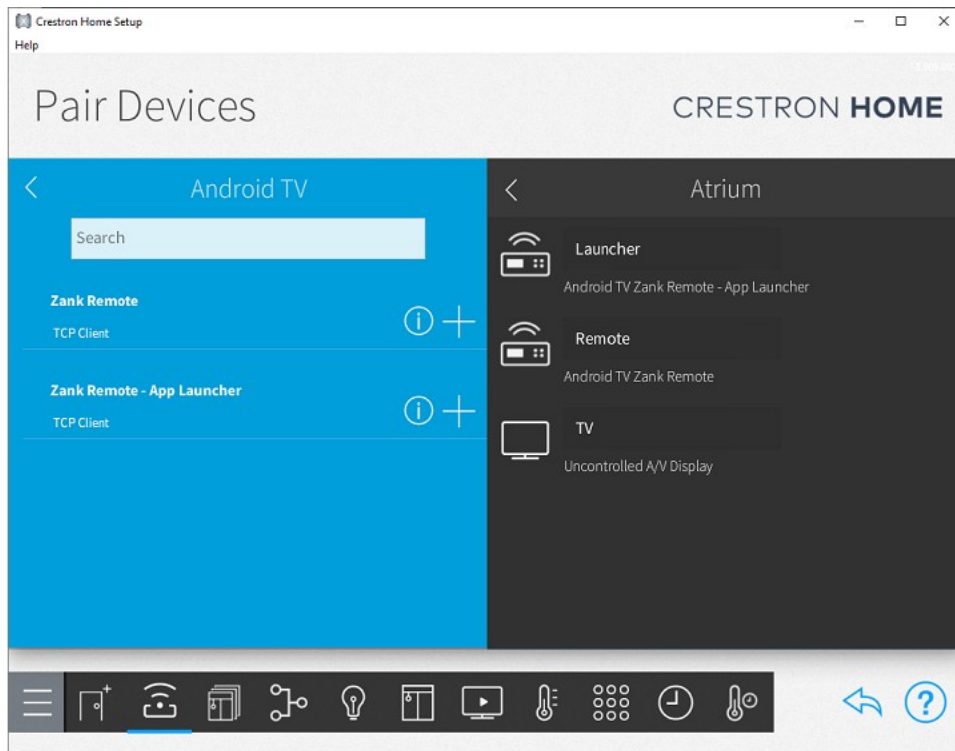
Installation

Standard Installation

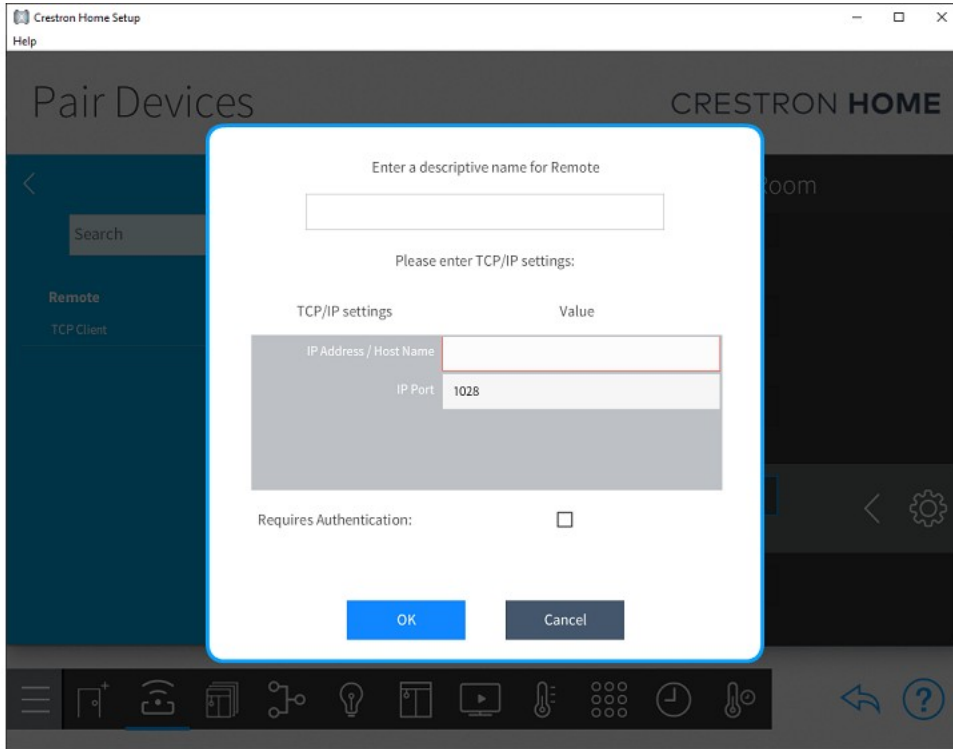
The Zank Remote Crestron driver relies on having the Zank Remote Android App installed on your Android TV or Fire TV device. The app is available in the Android Play Store or the Amazon Store and can be found by searching for Zank.

The Zank Remote Crestron Home driver is available for installation directly from the Drivers menu in the Pair Devices step in the Crestron Setup App. To find the driver you need to go into...

1. Pair Devices
2. Drivers
3. Streaming Player
4. Android TV
5. Zank Remote
6. Press the + button

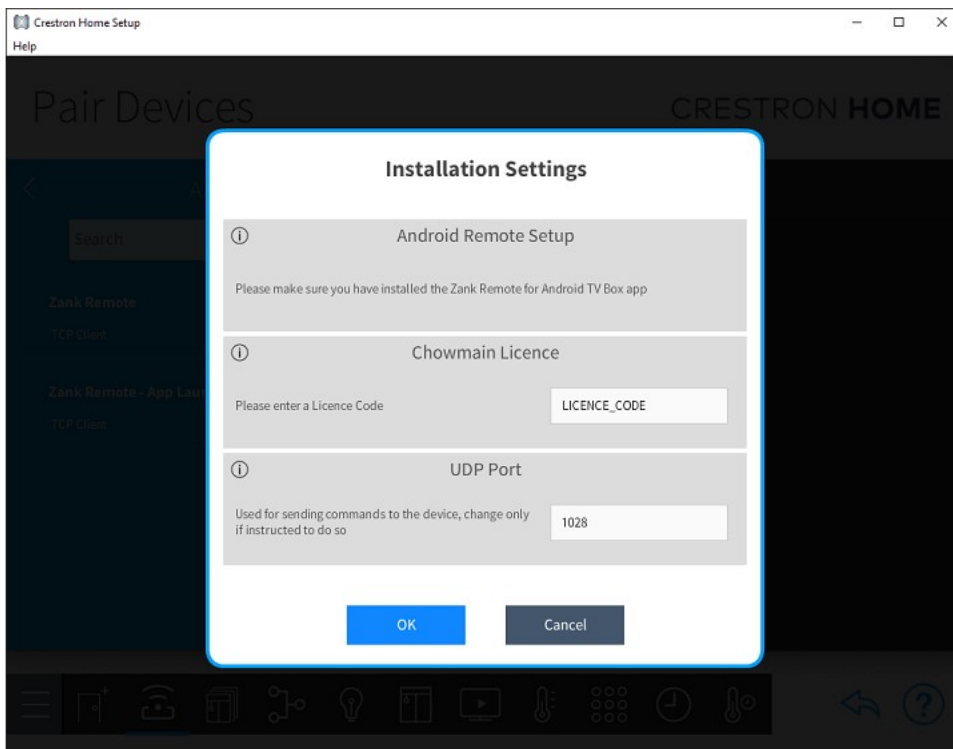


7. Enter the device name.
8. Enter the IP address of the device where the Zank Remote app is running.
9. The default TCP port used for Zank remote is 1029 only change if instructed to do so.



10. Enter the 16 Digit licence code you obtained from Driver Central.

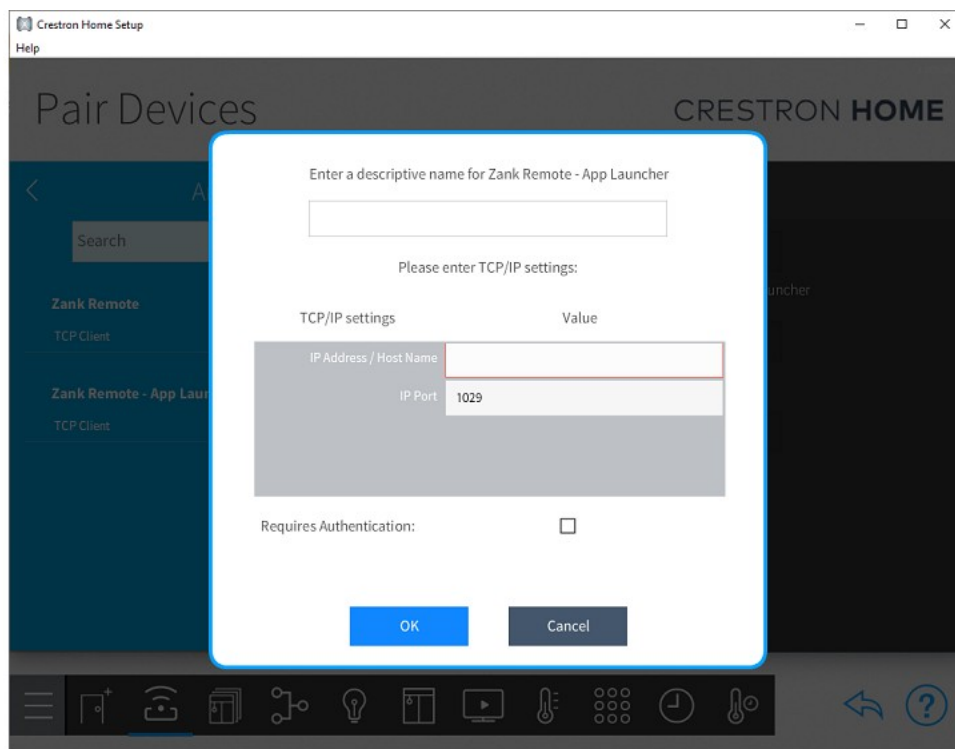
11. The default UDP port is set to 1028, only change this value if instructed to do so.



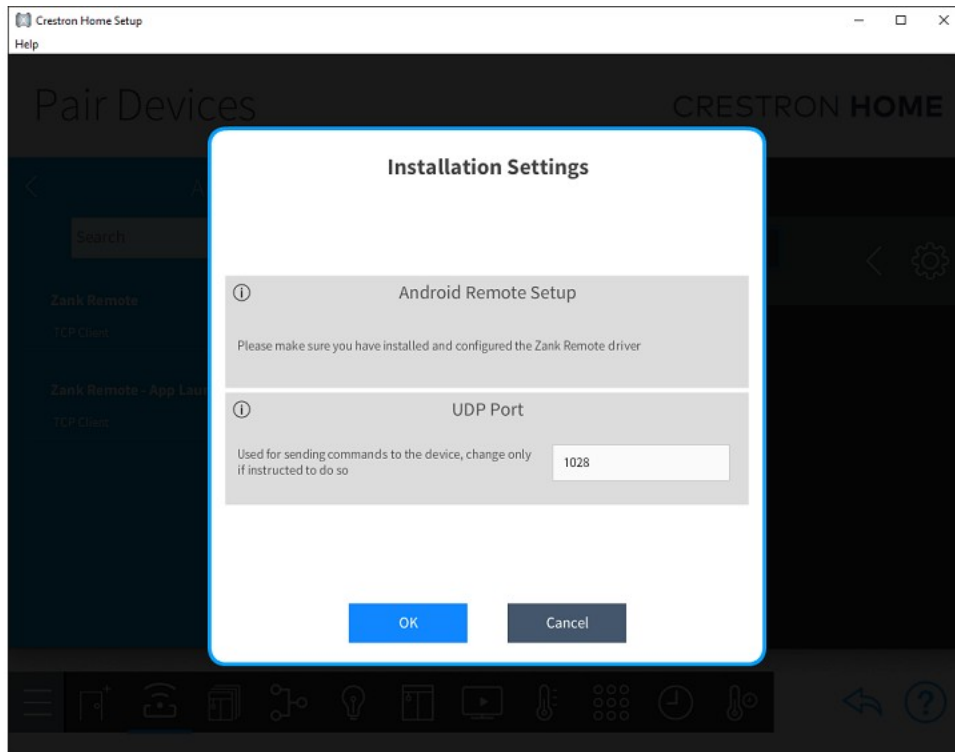
App Launcher

The App Launcher can be found in the same location as the remote and should only be installed only after the remote has been installed and configured. To find the driver you need to go into...

1. Pair Devices
2. Drivers
3. Streaming Player
4. Android TV
5. Zank Remote - App Launcher
6. Press the + button



7. Enter the device name.
8. Enter the IP address of the device where the Zank Remote app is running.
9. The default TCP port used for the app launcher is 1029 only change if instructed to do so.



10. The default UDP port is set to 1028, only change this value if instructed to do so.

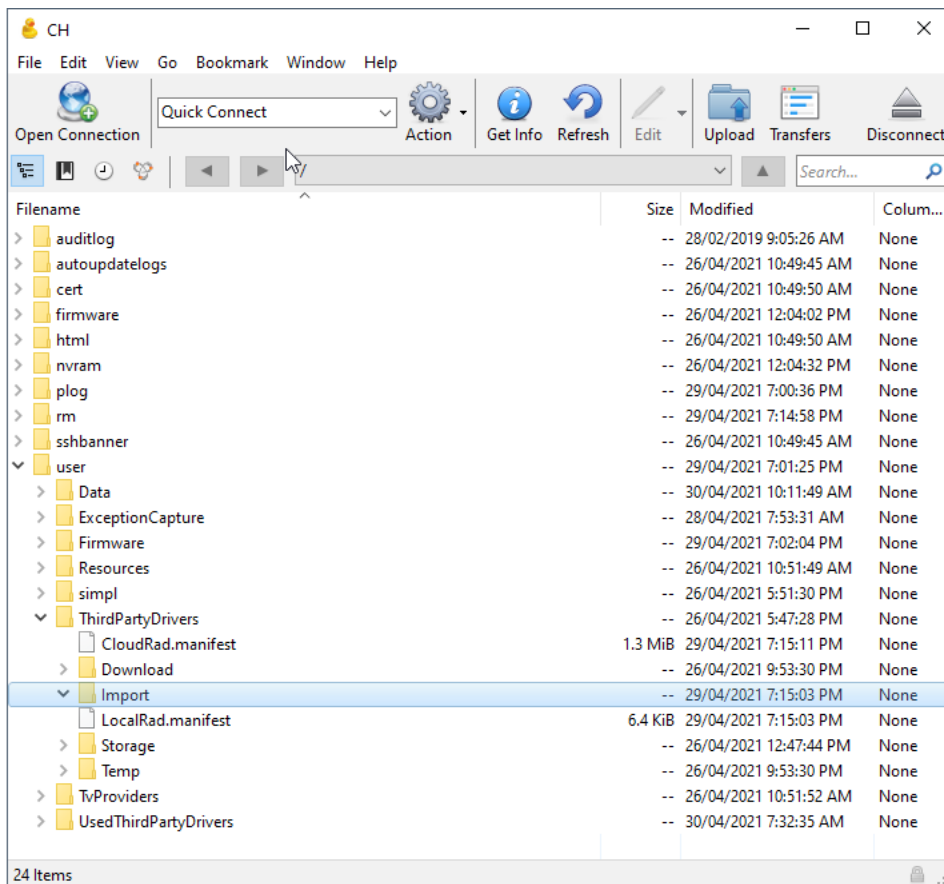
11. The applications list is updated on the first poll after setup, this will take about 1 minute to initialize.

Note:

- No licence is required to use the launcher app but a working remote must be running on the system.
- Settings are saved per connected device, so individual TV's will have their own favorites etc.

Manual Installation

If you want to replace the driver from the online database, or if its not currently there, you can manually install the driver. To manually install you will need to first copy the driver on to your Crestron Home processor. You will fist need to make a SFTP connection to the processor, you can do that with software like Cyberduck or Filezilla. Once you are connected you will need to copy the driver to the /user/ThirdPartyDrivers/Import folder. With this done you can go back to the Standard Installation steps.



Control

Remote

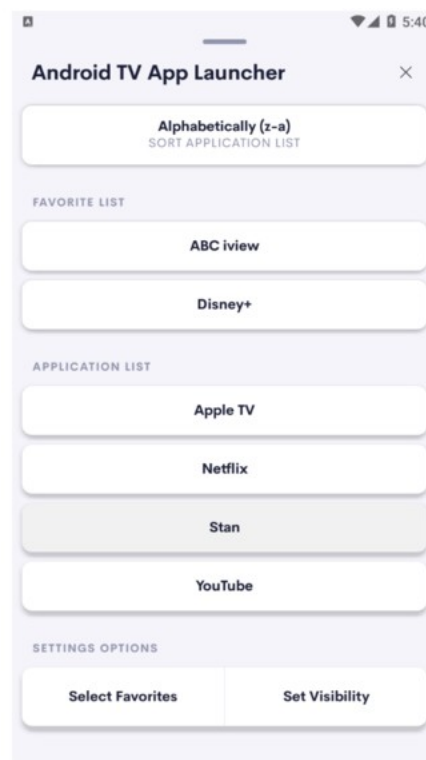
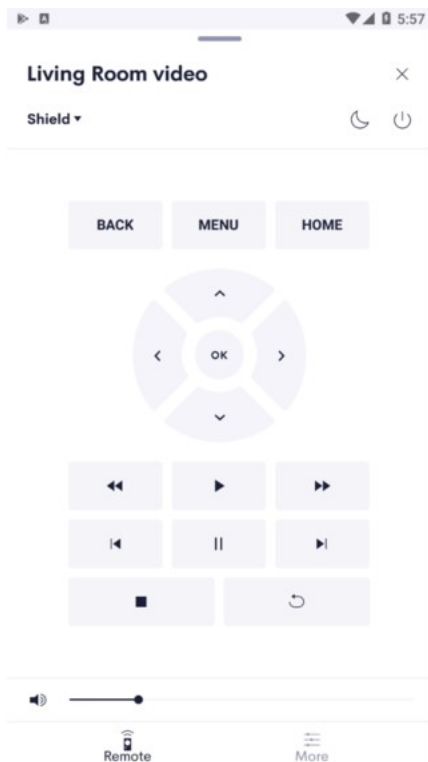
The Android TV Remote driver doesn't have its own user interface, instead forming the functional setup for other devices. Most of the setup required will be in the Source Routes configuration.

Launcher

The Android TV App Launcher will fetch the available applications from your device. Sitting above the list are the sorting options and at the bottom are the settings to favorite or hide an app. Favorited apps that are still visible will appear at the top of the list in their own group.

Sorting options available are:

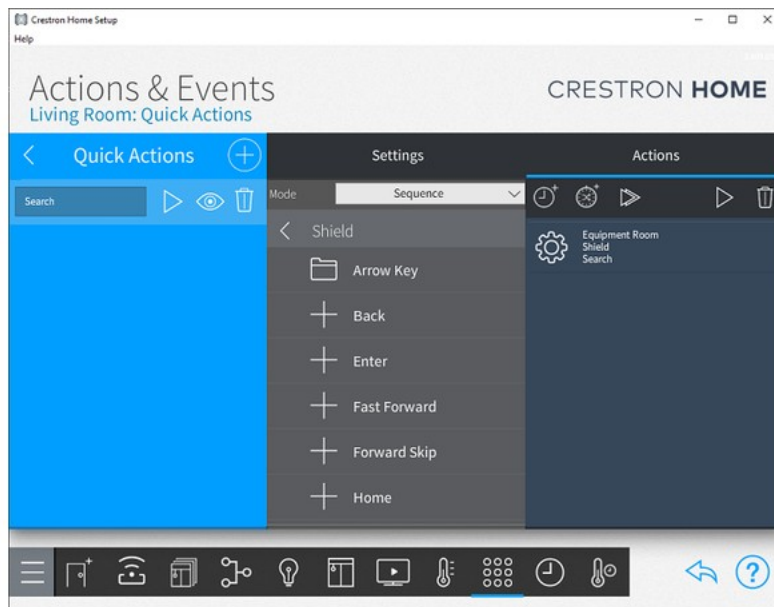
1. Alphabetically A-Z
2. Alphabetically Z-A
3. Most Used - as you launch apps the most used will move to the top of the list.
4. Favorites Only - Only shows the apps that have been favorited.



Sequences

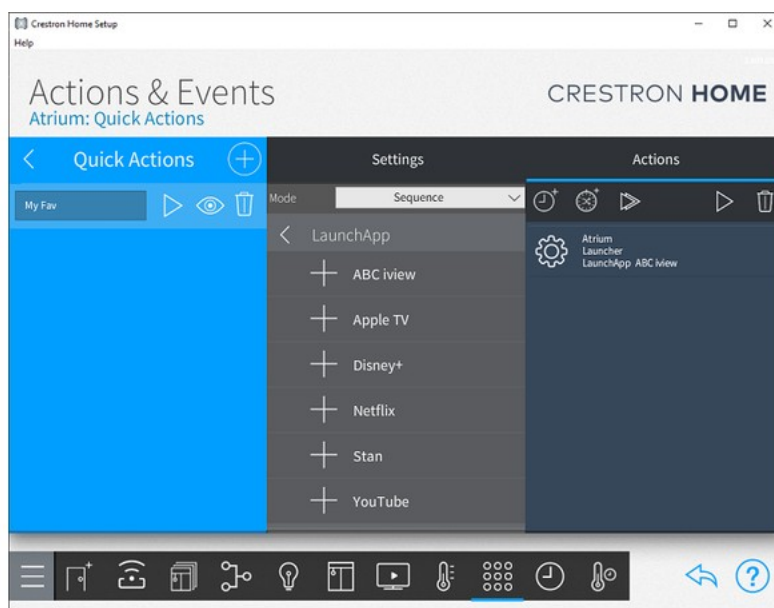
Remote

The receiver offers a number of actions for use in your own macros. The macros conform to the standard set available under Media Operations.



Launcher

Each application that has not been hidden will be available to include in a macro from the sequence options under the LaunchApp selection.



Events

AppLaunched

The AppLaunched event will trigger any time an app is launched. This can be used to automate turning on the TV and selecting your Android TV device just by launching an app.

