



Driver – Somfy UAI+ Gateway IP version 1.0.0

Driver

This release note is for the Somfy UAI+ Gateway IP Crestron Home driver.

Notes and Recommendations

This driver is compatible on Crestron Home processors using Crestron Home v3.007.0166.

System Requirements and Dependencies

Minimum version requirements:

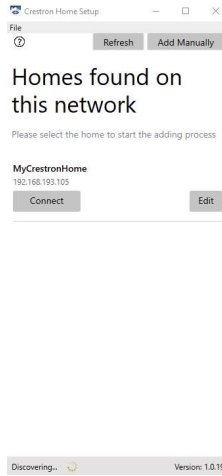
4-Series

- Processor firmware 2.4508.00085
- Crestron Home v3.007.0166
- Crestron Home SDK 8.0000.0012

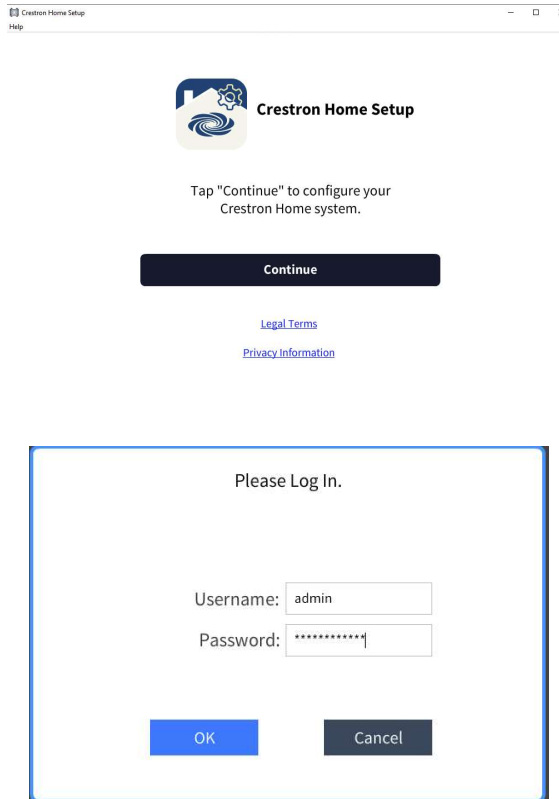
Installation/Upgrade Instructions

Follow the steps below to load and configure the driver.

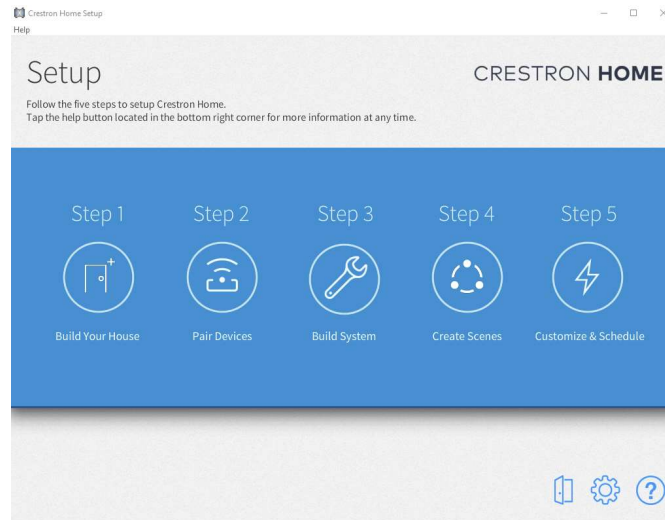
1. Open the Crestron Home Setup App (either mobile version or desktop version) and connect to the Crestron Home control processor.



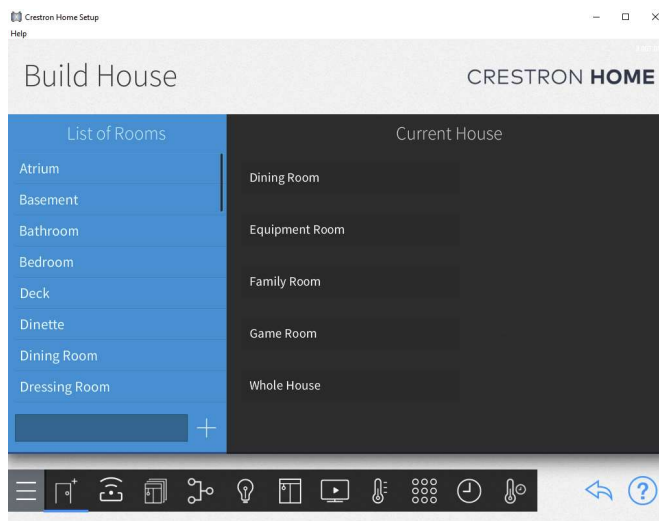
2. When the setup app opens, press **Continue** on the main screen and log in with the Crestron Home administrator credentials.



Once logged in, the Setup page will be displayed.

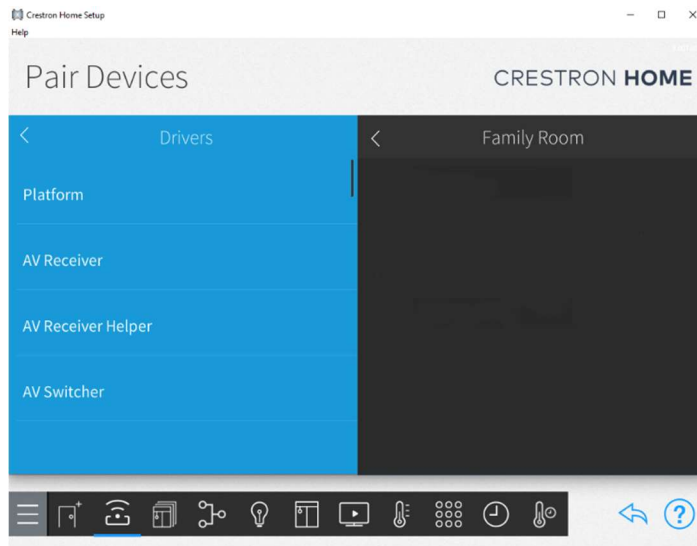


3. If setting up Crestron Home for the first time, press on **Build Your Home** to add rooms to your configuration, otherwise skip to step 5 below.
4. Scroll through the list of available rooms and press the **Plus Sign (+)** to add the room to your configuration. A custom room name can be added by typing in the name field next to the **Plus Sign**.



5. From the Setup page, press **Pair Devices** or press the Pair Devices Icon 

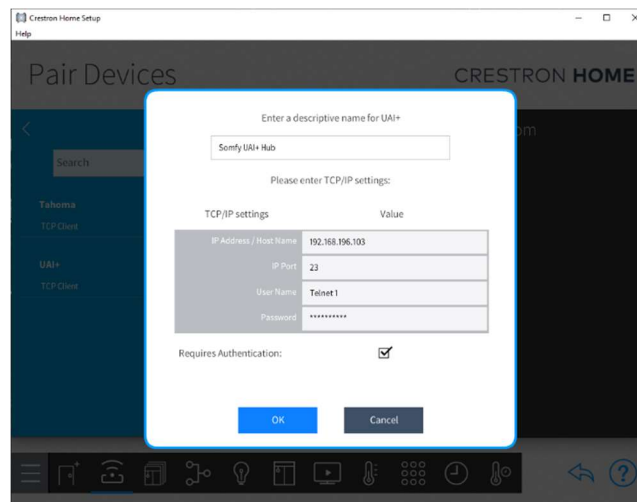
- Follow the instructions in steps 6-13 if adding a driver for the first time, otherwise skip to step 14. In the **Pair Devices** screen, select the room to which the driver will be added from the right side of the screen, then select **Drivers** from the menu options on the left side of the screen.



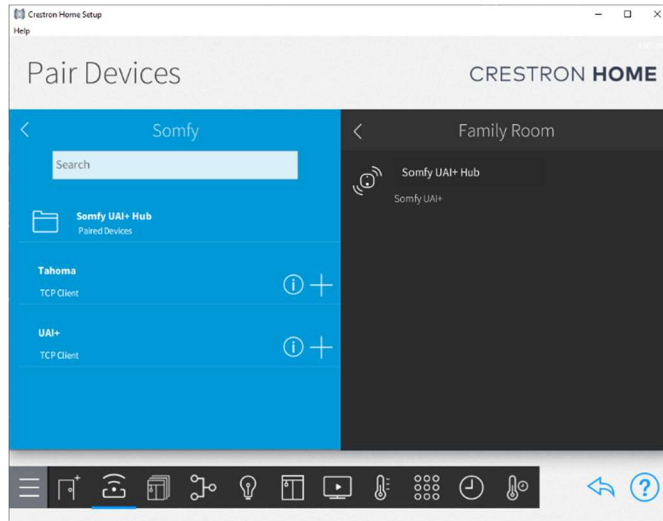
- Scroll to the driver type, press the **Platform** driver type name.
- Scroll to the **Somfy** make (manufacturer).
- Press the **Plus Sign (+)** to add the gateway client to the project.



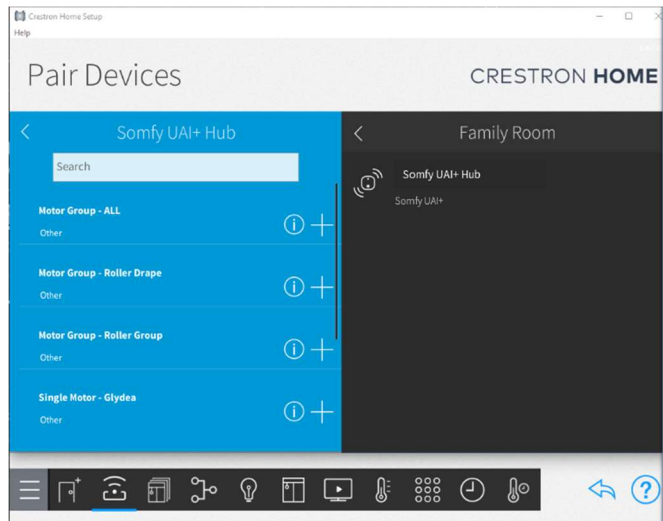
- Enter the friendly name for the driver, the IP address to connect to and the username and password credentials. If no credentials are required, deselect the **Requires Authentication** checkbox. Note, it is recommended to set up username/password credentials in the UAI+.



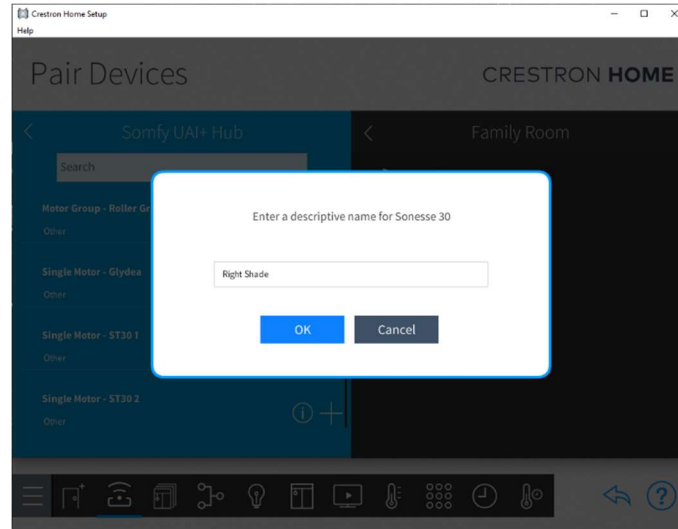
11. Press **OK**. The gateway will be added to the selected room. At this point, the gateway will go out and discover all of its motors and groups and a folder of found paired devices will appear in the menu above the TCP Client driver. The name of the folder will reflect the name given to the gateway driver in the previous step.




12. Press the **Paired Devices** folder to see the discovered motors/groups.

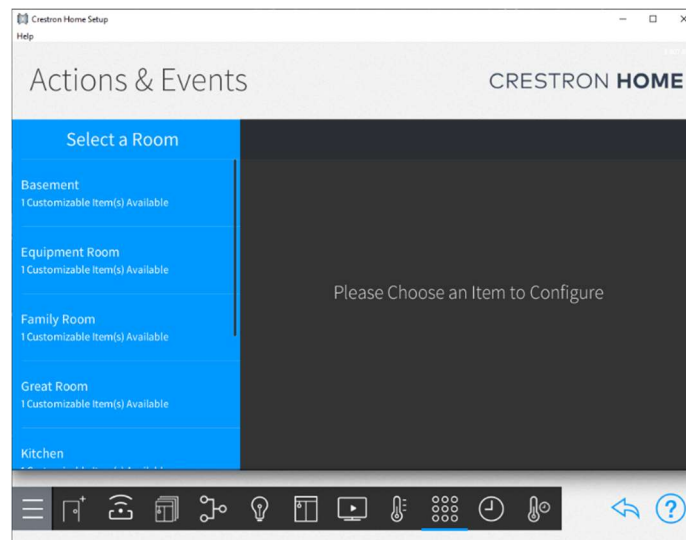


13. Add device drivers to their corresponding rooms by selecting a room on the right side of the screen, then press the **Plus Sign (+)** next to the driver to add to the selected room. Enter a friendly name for each driver as they are added. Note that as each device is added to a room, it is removed from the folder of detected devices.

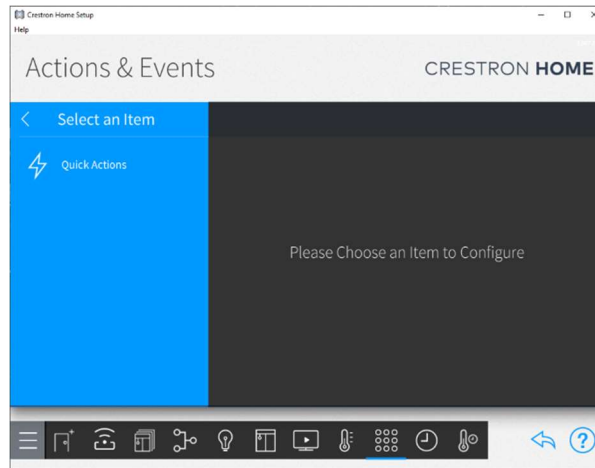


When all devices are added, the folder of paired devices is removed. If a device is removed from a room, it will reappear in the paired devices folder and be available to add to a different room.

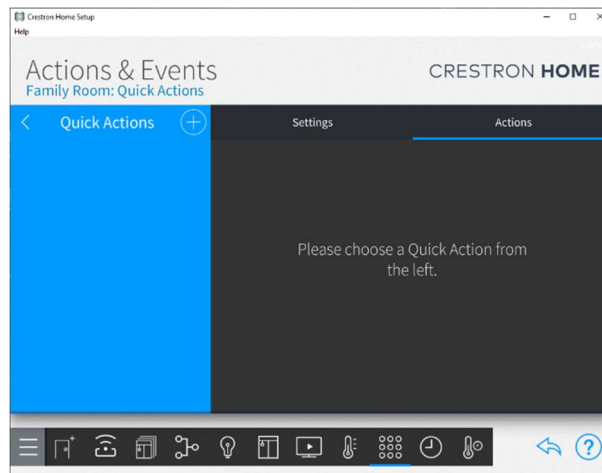
14. Press the **Actions & Events** button  from the bottom menu bar to navigate to the **Quick Actions** page.
15. Select a room to add quick actions to.



16. Press the **Quick Actions** menu item to navigate to the **Actions & Events** page for the room you selected.



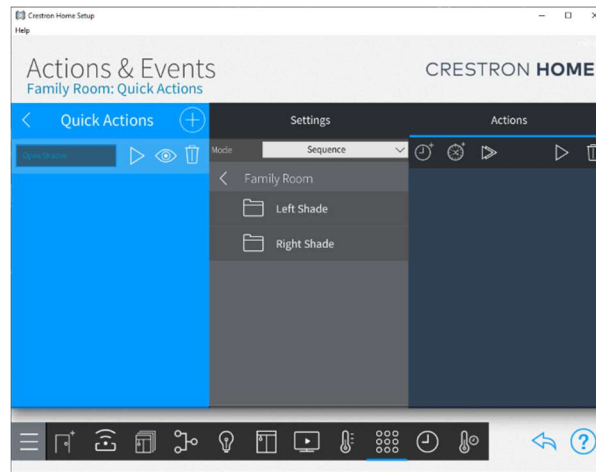
17. Press the **Plus Sign (+)** next to **Quick Actions** to add a quick action and add a name for the quick action.



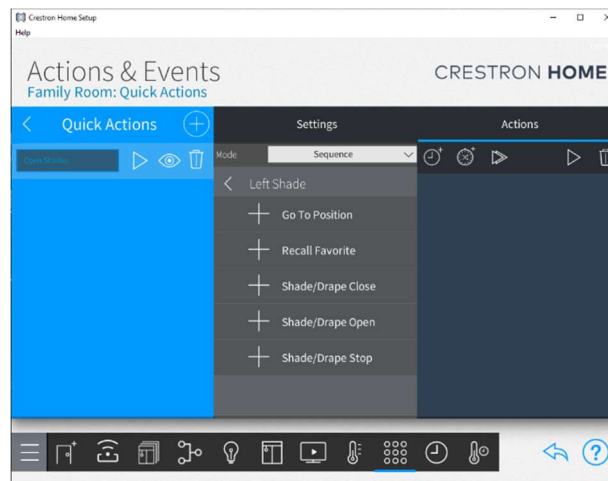
Please enter a descriptive name for the new Quick Action.


OK Cancel

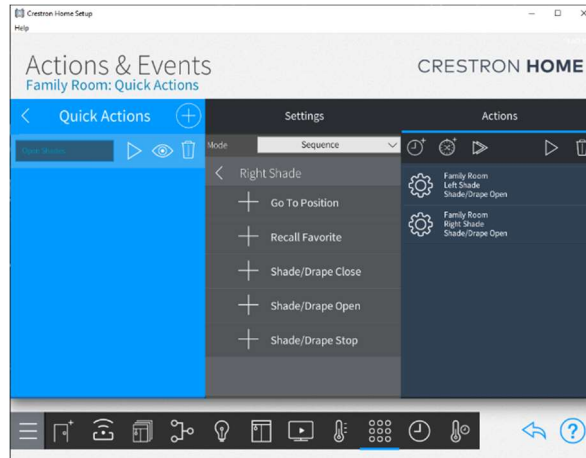
18. Select **Sequence** from the **Mode** drop-down menu, then select the room to add the quick action to.



19. Press the name of the device driver, such as **Left Shade**.



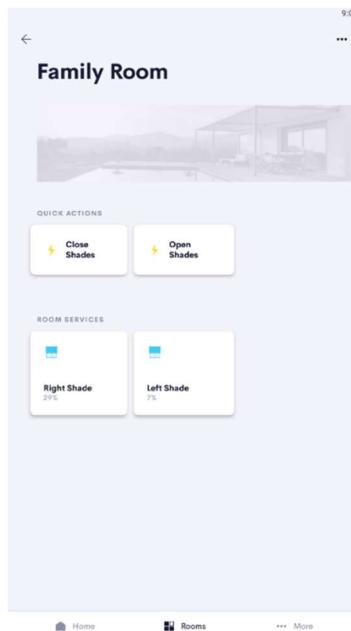
20. Press the **Plus Sign (+)** sign next to the function this quick action will trigger. Observe that the custom feature is added to the sequence of actions. More than one function can be added to the quick action sequence. To remove a function, press the trash can icon  in the Actions menu and press the function to remove.



**Note that it is often more manageable to add motors to groups and assign quick actions to the groups themselves, rather than duplicating the same quick action for every motor you would like it to run against.*

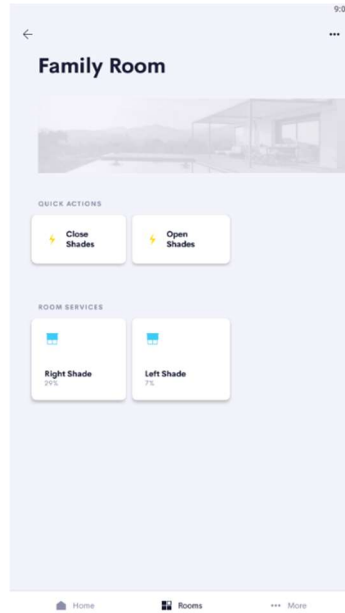
Quick Actions Displayed

Quick actions will appear in the Crestron Home User App when the room to which the quick actions have been added is displayed.

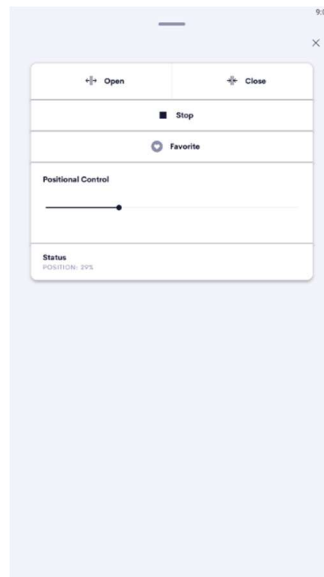


End-User Experience

The screenshot below shows an example of a room page where a device driver has been added. The room page shows any Quick Actions added to the room for the driver.



The screenshot below shows the shade group control added to the Family Room. This screenshot shows the controls available for motors/groups which provide position feedback. For motors/groups that do not provide position feedback, the Favorite, Positional Control and Status sections will be hidden.



Limitations/Known Issues

The Somfy UAI+ Gateway IP driver is only compatible with Crestron Home. It is not compatible with .AV Framework or SIMPL Windows.

Supported Features

The gateway driver has no user-accessible features. The motor driver includes the following features:

If the motor supports position feedback:

- Open
- Close
- Stop
- Favorite
- Go To Position

If the motor does not support position feedback:

- Open
- Close
- Stop

**Note that a group is a collection of motors, defined using the UAI+ software/webpage. Control of a group will control all motors assigned to the group simultaneously. Position feedback will be based on the first motor in the group. If there are no motors in the group that support feedback, there will be no feedback available for the group either.*

Test Environment

The test environment for the driver is as follows:

- Crestron CP4-R v2.45.08.0085
- Crestron Home v3.007.0166
- Crestron Home App v 1.12.17

Supported Models

The Somfy UAI+ Gateway is the only model gateway this driver supports. All motors that can be added to the Somfy UAI+ hub are also supported. This driver has been tested both with motors that support position feedback and motors that do not.

Contact Information

Somfy Systems, Inc.
121 Herrod Boulevard
Dayton
NJ 08810
1-800-64-SOMFY

<https://www.somfysystems.com/en-us/discover-somfy/contact-us/service-support>

Version History

1.0.0 08/23/2021

Changes since Last Version

New Features

- Initial Release

Licensing and Copyright Information

© 2021, Somfy Systems Inc., All Rights Reserved.